

**BITN AD 2.1 Staðarauðkenni og heiti
flugvallar**

**BITN AD 2.1 Aerodrome location
indicator and name**

BITN - ÞÓRSHÖFN / Thorshofn

**BITN AD 2.2 Landfræðilegar og
stjórnunarupplýsingar
flugvalla**

**BITN AD 2.2 Aerodrome geographical
and administrative data**

ENGLISH/ ICELANDIC		
1	ARP coordinates and site at Aerodrome Hnattstaða flugvalla	661306N 0152005W
2	Direction and distance from the Town Stefna og fjarlægð frá bæ	2NM - 360° GEO
3	Elevation / Reference temperature Landhæð / viðmiðunarhitastig	64FT
4	MAG VAR / Annual change Segulskekkja / árleg breyting	14°W (2005) 18 min
5	AD Administration, address, telephone, telefax, AFS Rekstraraðili flugvallar, heimilisfang, sími, símbréf, AFS	Flugstoðir ohf. / ISAVIA Akureyrarflugvelli 600 Akureyri, Iceland Telephone: +354 424 4370 Telefax: +354 461 4370 AFTN: BICAYAYT Commercial Telegraph: CIVILAIR REYKJAVIK BITN AFIS / BITN AFIS: Tel: +354 468 1422, GSM: +354 895 1422 Fax: +354 468 1353
6	Types of traffic permitted Leyfð flugumferð	IFR-VFR
7	Remarks Athugasemdir	NIL

BITN AD 2.3 Þjónustutímar

BITN AD 2.3 Operational hours

ENGLISH/ ICELANDIC		
1	AD Administration Rekstraraðili flugvallar	During Office Hours 09:00-16:00 Á skrifstofutíma 09:00-16:00
2	Customs and immigration Tollur og útlendingaeftirlit	NIL
3	Health and sanitation Heilsugæsla	In town/Í bænum
4	AIS Briefing Office Kynningarstofa upplýsingaþjónusta	NIL
5	ATS Reporting Office (ARO) Tilkynningarstöð flugumferðarþjónustu	NIL
6	MET Briefing Office Kynningastofa veðurþjónustu	MET office by telephone Veðurstofa Íslands, símleiðis
7	ATS Flugumferðarþjónusta	HS - See AIP Supplement Möguleg þjónusta - Sjá AIP Supplement
8	Fuelling Eldsneyti	NIL

ICELANDIC

ENGLISH

9	Handling	O/R
	Afgreiðsla	Skv. beiðni
10	Security	NIL
	Öryggisgæsla	
11	De-icing	NIL
	Afising	
12	Remarks	NIL
	Athugasemdir	

BITN AD 2.4 Afgreiðsla og tæki

BITN AD 2.4 Handling services and facilities

ENGLISH/ ICELANDIC		
1	Cargo handling facilities:	Limited - PN
	Fraktmeðhöndlun	Takmörkuð - Með fyrirfram beiðni
2	Fuel / oil types	NIL
	Eldsneytistegundir / olíur	
3	Fuelling facilities / capacity	NIL
	Eldsneytisbúnaður / magn	
4	De-icing facilities	NIL
	Afisingarbúnaður	
5	Hanger space available for visiting aircraft	NIL
	Flugskýlisplass fyrir aðkomuvélar	
6	Repair facilities for visiting aircraft	NIL
	Viðhaldsmöguleikar fyrir aðkomuvélar	
7	Remarks	No oxygen or related servicing
	Athugasemdir	Ekkert súrefni eða hliðstæð þjónusta

BITN AD 2.5 Aðstaða farþega

BITN AD 2.5 Passenger facilities

ENGLISH/ ICELANDIC		
1	Hotels	Available in town / Fáanleg í bænum
	Hótel	
2	Airport Restaurant	NIL
	Veitingastaðir á flugvelli	
3	Transportation	Taxi/bus available on-request
	Fólksflutningar	Leigubílar/rútur samkvæmt beiðni
4	Medical facilities	NIL
	Hjúkrunaraðstaða	
5	Bank and Post Office	In Town / í bænum
	Banki og pósthús	
6	Tourist Office	NIL
	Ferðaskrifstofa	
7	Remarks	NIL
	Athugasemdir	

BITN AD 2.6 Björgun og eldvarnir

BITN AD 2.6 Rescue and fire fighting services

ENGLISH/ ICELANDIC		
1	AD category for fire fighting	CAT III
	Gæðaflokkur flugvallarslökkviliðs	
2	Rescue equipment	Yes / Já
	Björgunartæki	
3	Capability for removal of disabled aircraft	Crane and trailer in town Krani og tengivagn í þorpi
	Möguleiki á að fjarlægja bilaðar flugvélar	
4	Remarks	NIL
	Athugasemdir	

BITN AD 2.7 Árstíðarbundnar hreinsanir

BITN AD 2.7 Seasonal Availability - Clearing

ENGLISH/ ICELANDIC		
1	Types of Equipment	See snow plan AD 1.2.2 Sjá kafla AD 1.2.2 um vetrarviðhald
	Tegund tækja	
2	Clearance priorities	See snow plan AD 1.2.2 Sjá kafla AD 1.2.2 um vetrarviðhald
	Forgangsröð hreinsunar	
3	Remarks	All seasons, winter conditions from Oct. to Apr. Allt árið, vetrartími frá okt. til apr.
	Athugasemdir	

BITN AD 2.8 Hlað, akbrautir og staðsetning gátstaða

BITN AD 2.8 Aprons, taxiways and check locations data

ENGLISH/ ICELANDIC		
1	Apron surface and strength	Asphalt stabilized gravel PCN 15 Tjörubundin grús PCN 15
	Yfirborð staðis og styrkur	
2	Taxiway width, surface and strength	20 m - asphalt stabilized gravel PCN 15 20 m - tjörubundin grús PCN 15
	Breidd akbrautar, yfirborð og styrkur	
3	ACL location and elevation	To be notified / Verður tilkynnt
	Staðsetning og hæð fyrir hæðarmælisathugun	
4	VOR/INS checkpoints	NIL
	VOR/INS gátstaðir	
5	Remarks	NIL
	Athugasemdir	

BITN AD 2.9 Leiðbeininga- og upplýsingaskilti og merkingar

BITN AD 2.9 Surface movement guidance and control system and markings

ENGLISH/ ICELANDIC		
1	TWY guidelines	NIL
	Akbrautamerkingar	
2	RWY & TWY markings and LGT	Yes / já
	Flugbrautar- og akbrautamerkingar og ljós	
3	Stop bars	NIL
	Stöðvunarljós	
4	Remarks	NIL
	Athugasemdir	

BITN AD 2.10 Flugvallarhindranir

BITN AD 2.10 Aerodrome Obstacles

In approach/TKOF areas			In circling area and at AD		Remarks
1			2		
RWY/ Area affected	Obstacle type Elevation Markings/LGT	Coordinates	Obstacle type Elevation Markings/ LGT	Coordinates	3
a	b	c	a	b	
OBSTRUCTIONS IN APAPI APPROACH SECTORS.					
To be notified / Verður tilkynnt					

BITN AD 2.11 Veittar veðurupplýsingar

BITN AD 2.11 Meteorological information provided

ENGLISH/ ICELANDIC		
1	Associated MET Office Veðurstofa Íslands Bústaðavegi 9 150 Reykjavík Ísland Sími : +354 522 6000 Símbref: 522 6002 TELEX: METEO REYKJAVIK AFS: BIRKMYX Netfang: office@vedur.is Veffang: http://www.vedur.is Veðurathuganir líka gerðar á flugvelliinum	Meteorological Office Veðurstofa Íslands Bústaðavegi 9 IS-150 Reykjavík Iceland. Telephone: +354 522 6000 Telefax: + 354 522 6002 TELEX: METEO REYKJAVIK AFS: BIRKMYX E-mail address: office@vedur.is Internet address: http://www.vedur.is Observations also taken locally at the aerodrome
2	Hours of service Þjónustutími	H24
3	Office responsible for TAF preparation Skrifstofa ábyrg fyrir TAF Periods of validity Gildistími	MET Office / Veðurstofa Íslands See GEN 3.5.4.1 / Sjá GEN 3.5.4.1
4	Type of landing forecast Tegund upplýsinga fyrir landingu	–
5	Briefing/consultation provided Kynning/ráðgjöf veitt	Telephone / sími: +354 522 6000
6	Flight documentation Fluggögn Language(s) used Tungumál	Charts available via FAX Kort möguleg með símbrefi English and Icelandic/ Enska og íslenska
7	Charts and other information available for briefing or consultation Kort og aðrar upplýsingar tiltækar fyrir kynningu og ráðgjöf	S, U, P, W, T
8	Supplementary equipment available for providing information Önnur tæki til upplýsingaöflunar	NIL
9	ATS units provided with information Flugumferðarþjónusta sem fær upplýsingarnar	
10	Additional information (limitation of service, etc.) Viðbótarupplýsingar (takmörkun þjónustu)	NIL

Other Met Data Provided

To be notified / Verður tilkynnt

BITN AD 2.12 Sérkenni flugbrauta

BITN AD 2.12 Runway physical characteristics

Designations RWY NR	TRUE/MAG BRG	Dimensions of RWY (M)	Strength (PCN)/surface of RWY and SWY	THR coordinates	THR elevation & highest elevation of TDZ of precision APP RWY	Slope of RWY- SWY
1	2	3	4	5	6	7
02	2.87 / 17	1199x30	PCN 15	661247.08N 0152007.38W	51 FT	
20	182.87 / 197	1199x30	PCN 15	661325.80N 0152002.57W	64 FT	

Designations RWY NR	SWY dimensions (M)	CWY dimensions (M)	Strip dimensions (M)	OFZ
1	8	9	10	11
02	NIL	NIL	1319x80	
20	NIL	NIL	1319x80	

Designations RWY NR	Remarks
1	12
02	NIL
20	

BITN AD 2.13 Skilgreindar brautarlengdir

BITN AD 2.13 Declared distances

RWY Designator	TORA (M)	TODA (M)	ASDA (M)	LDA (M)	Remarks
1	2	3	4	5	6
02	1199	1199	1199	1199	
20	1199	1199	1199	1199	

BITN AD 2.14 Aðflugs- og flugbrautarljós

BITN AD 2.14 Approach and runway lighting

RWY Designator	APCH LGT type LEN INTST	THR LGT colour WBAR	VASIS (MEHT) PAPI	TDZ LGT LEN	RWY Centre Line LGT Length, spacing, colour, INTST	RWY edge LGT LEN, spacing, colour, INTST	RWY End LGT colour WBAR	SWY LGT LEN (M) colour	Remarks
1	2	3	4	5	6	7	8	9	10
02	THR ID LGT FLG WHITE	THR LIH GREEN	PAPI	-	-	W edge LIH	R	-	RWY edge LGT are 7,5 m from RWY edge
20	THR ID LGT FLG WHITE	THR LIH GREEN	PAPI	-	-	W edge LIH	R	-	

BITN AD 2.15 Önnur lýsing og vararafmagn

BITN AD 2.15 Other lighting, secondary power supply

ENGLISH/ ICELANDIC		
1	ABN/IBN location, characteristics and hours of operation Flugvallarviti - staðsetning	NIL
2	WDI location and LGT Anemometer location and LGT Vindmælir	Close to midpoint of RWY / Við miðju brautar
3	TWY edge Akbrautarkantljós	NIL
4	Secondary power supply / switch-over time Vararafmagn / skiptitími	NIL
5	Remarks: Athugasemdir	NIL

BITN AD 2.16 Lendingarsvæði fyrir þyrlur

BITN AD 2.16 Helicopter landing area

ENGLISH/ ICELANDIC		
1	Coordinates TLOF or THR of FATO Staðsetning landingarsvæðis	On runway / Á braut
2	TLOF and/or FATO elevation M/FT Hæð á landingarstað M/FT	64 FT
3	TLOF and FATO area dimensions, surface, strength, marking Stærð, yfirborð, styrkleiki, merking	Runway Asphalt stabilized gravel PCN 15/ Tjörubundin grús PCN 15
4	True and MAG BRG of FATO Réttstefna og segulstefna á FATO	NIL
5	Declared distance available Skilgreind lengd	NIL
6	Remarks Athugasemdir	NIL

BITN AD 2.17 Loftrými flugumferðarþjónustu

BITN AD 2.17 ATS airspace

ENGLISH/ ICELANDIC		
1	Designation and lateral limits Heiti og útlínur	Uncontrolled airspace/ Óstjórnað loftrými
2	Vertical limits Hæðarmörk	NIL
3	Airspace classification Flokkun loftrýmis	Class G / Flokkur G
4	ATS unit call sign language(s) Kallmerki og tungumál notað í flugumferðarþjónustu	Icelandic / íslenska Thorshöfn AFIS / Þórshöfn AFIS
5	Transition altitude Skiptihæð	7000FT MSL
10	Remarks Athugasemdir	NIL

BITN AD 2.18 ATS fjarskiptabúnaður

BITN AD 2.18 ATS communication facilities

Service designation	Call sign	Frequency		Hours of Operation	Remarks
		Transmit	Receives		
1	2	3		4	5
AFIS	Thorshofn Radio	118.1		See AIP Supplement	Reykjavik Control 119.7

BITN AD 2.19 Flugleiðsögu- og aðflugsbúnaður

BITN AD 2.19 Radio navigation and landing aids

Type of aid, CAT of ILS/MLS (For VOR/ILS/MLS, give VAR)	ID	Frequency	Hours of operation	Site of transmitting antenna coordinates	Elevation of DME transmitting antenna	Remarks
1	2	3	4	5	6	7
NDB Thorshofn	TN	373 kHz	H24	661314.94N 0151952.40W		

BITN AD 2.20 Svæðisbundnar umferðarreglur

NIL

BITN AD 2.20 Local traffic regulations

NIL

BITN AD 2.21 Flugaðferðir til hávaðamildunar

NIL

BITN AD 2.21 Noise abatement procedures

NIL

BITN AD 2.22 Flugaðferðir

BITN AD 2.22 Flight procedures

BITN AD 2.23 Viðbótarupplýsingar

NIL

BITN AD 2.23 Additional Information

NIL

BITN AD 2.24 Kort sem tilheyra Þórshafnarflugvelli

BITN AD 2.24 Chart Related to Thorshofn Aerodrome

Bls. / Page	Kort / Chart
BITN AD 2.24.10.1-1	Instrument Approach Chart - ICAO RNAV (GNSS) Circling Approach Course 071°
BITN AD 2.24.10.2-1	Instrument Approach Chart - ICAO NDB RWY 20

THIS PAGE INTENTIONALLY LEFT BLANK

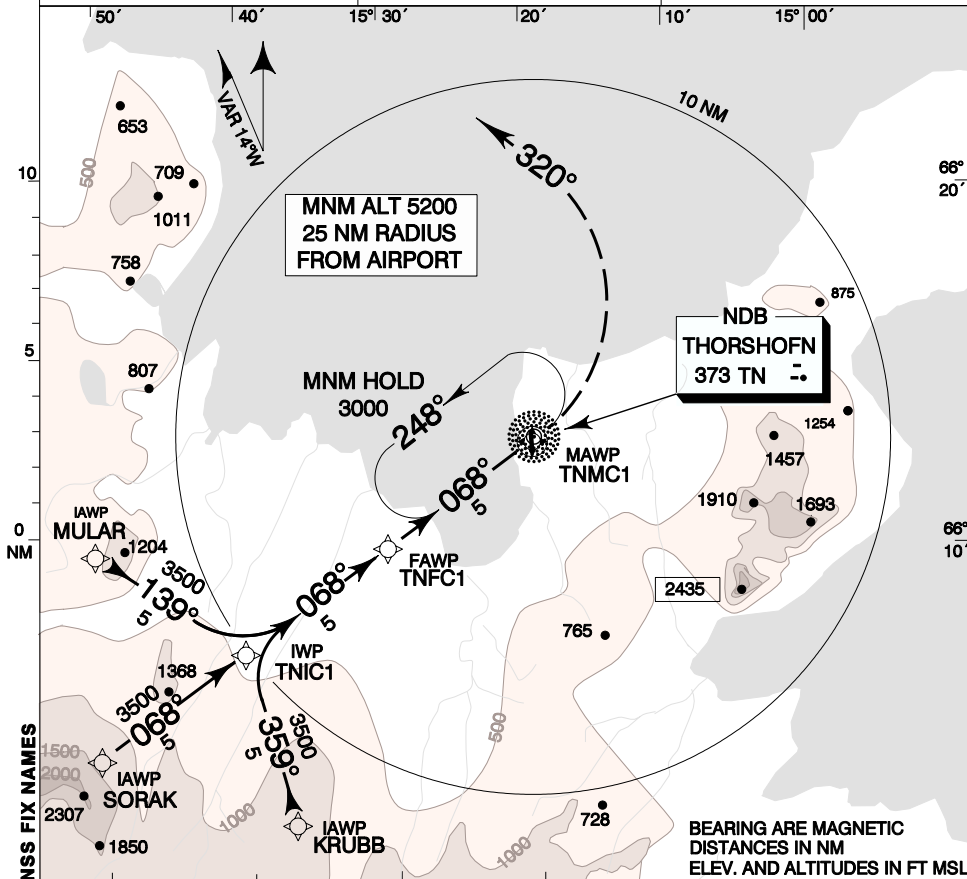
AIP Iceland

FLUGMÁLAHANDBÓK
INSTRUMENT APPROACH
CHART - ICAO
SCALE 1:400 000

ELEV 64
ARP 66°13'06N 015°20'05"N
THORSHOFN AFIS 118.1
ACC 119.7

BITN
4 AUG 2005

THORSHOFN
RNAV (GNSS) CIRCLING
APPROACH COURSE 068°



CHANGES: LAMBA CHANGED TO SORAK; VAR, GNSS FIX NAMES

TRANS LEVEL BY ATC

TRANS ALT 7000

MULAR

SORAK

KRUBB

IWP TNIC1

FAWP TNFC1

MAWP TNMC1

TN NDB

ELEV 64

5200

3500

3000

2000

1368

1204

765

728

2435

1910

1693

1254

875

1011

709

653

758

807

2307

1850

MISSED APPROACH:

LEFT TURN TO HEADING 320°

PASSING 2500.

LEFT TURN TO TN NDB AND

HOLD AT 3000.

OCA/(H)	A	B
APPROACH		
CIRCLING	560 / (496)	

CIRCLING ONLY WEST OF RWY

FLUGMÁLASTJÓRN ÍSLANDS

ICELANDIC CAA

THIS PAGE INTENTIONALLY LEFT BLANK

AIP Iceland

FLUGMÁLAHANDBÓK

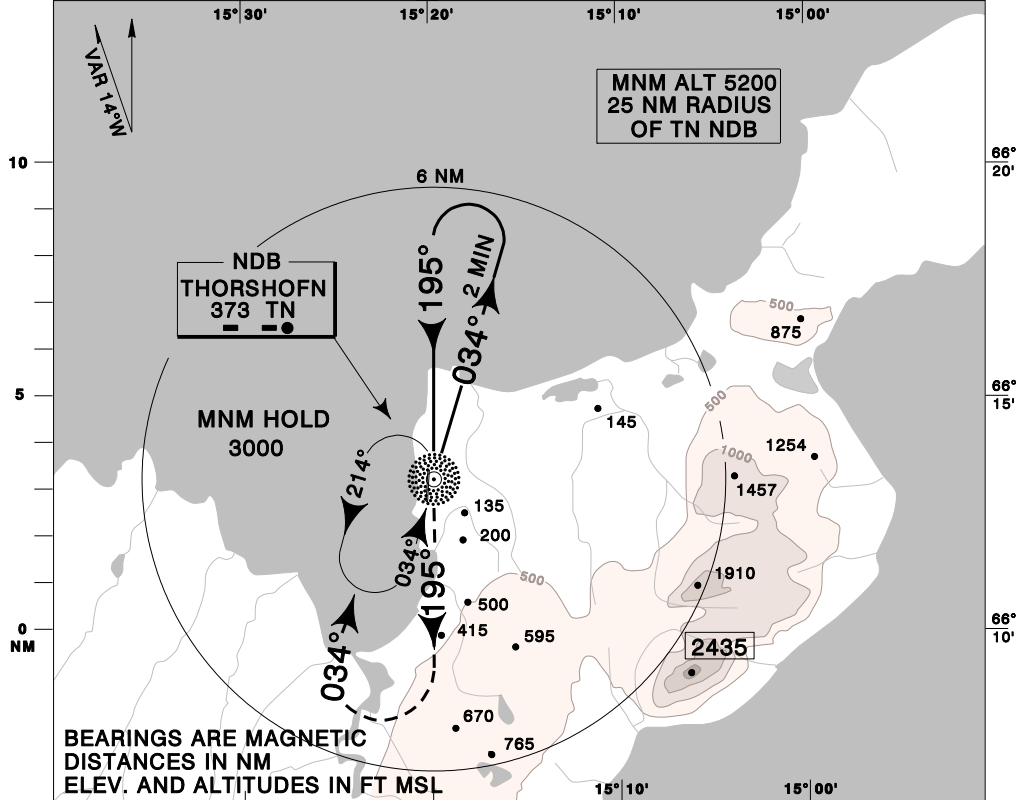
INSTRUMENT APPROACH
CHART - ICAO

SCALE 1: 300 000

ELEV 64	
ARP 661306N 0152005W	
THORSHOFN AFIS	118.1
ACC	119.7

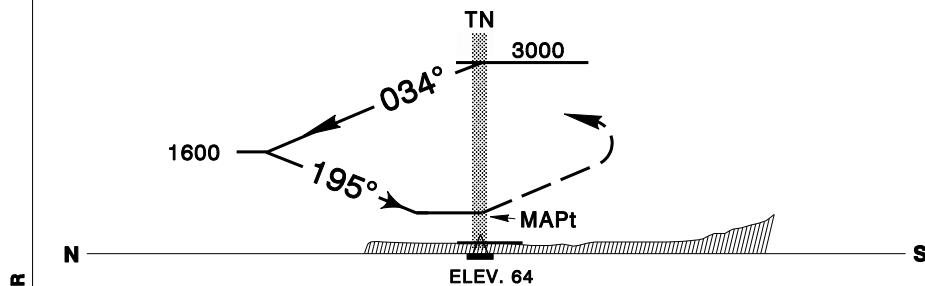
BITN
29 SEP 2005

THORSHOFN
NDB RWY 20
NDB 373 TN



TRANS LEVEL BY ATC
TRANS ALT 7000

MISSED APPROACH :
CLIMB ON TRACK 195°, AT 1000 TURN
RIGHT HEADING 034° CLIMBING TO
3000 AND JOIN TN NDB HOLDING



CHANGES : VAR

OCA/ (H)	A	B	
Straight in Approach	400/ (336)		
CIRCLING	560/ (496)		CIRCLE ONLY WEST OF RUNWAY

FLUGMÁLASTJÓRN ÍSLANDS

ICELANDIC CAA

THIS PAGE INTENTIONALLY LEFT BLANK

BITN AD 2.25 Leiðsöguhnit

BITN AD 2.25 Way Point List

2.25.1 ÞÓRSHÖFN GPS Circling

2.25.2 Thorshofn GPS Circling

Transition Waypoints:

	CODING		DISPLAY	
KRUBB (IAF)	66 02 31.48N	015 37 05.45W	66 02.52N	015 37.09W
SORAK (IAF)	66 04 27.42N	015 50 23.93W	66 04.46N	015 50.40W
MULAR (IAF)	66 10 07.22N	015 50 37.35W	66 10.12N	015 50.62W
TNICI (IF)	66 07 20.94N	015 40 19.91W	66 07.35N	015 40.33W
TNFCI (FAF)	66 10 13.80N	015 30 13.60W	66 10.23N	015 30.22W
TNMCI (MAP _t)	66 13 06.00N	015 20 05.00W	66 13.10N	015 20.08W

THRESHOLD COORDINATES

	CODING		DISPLAY	
THR RWY 02	66 12 47.08N	15 20 7.38W	66 12.78N	015 20.12W
THR RWY 20	66 13 25.80N	15 20 2.57W	66 13.43N	015 20.43W

THIS PAGE INTENTIONALLY LEFT BLANK