

**BIGR AD 2.1 Staðarauðkenni og heiti
flugvallar**

**BIGR AD 2.1 Aerodrome location
indicator and name**

BIGR - GRÍMSEY / Grimsey

**BIGR AD 2.2 Landfræðilegar og
stjórnunarupplýsingar
flugvalla**

**BIGR AD 2.2 Aerodrome geographical
and administrative data**

ENGLISH/ ICELANDIC		
1	ARP coordinates and site at Aerodrome Hnattstaða flugvalla	663317N 0180103W
2	Direction and distance from the CITY Stefna og fjarlægð frá borg	1 NM - 360° GEO
3	Elevation / Reference temperature Landhæð / viðmiðunarhitastig	81 FT
4	MAG VAR / Annual change Misvísun / árleg breyting	16° (2005) / 18 min.
5	AD Administration, address, telephone, telefax, AFS Rekstraraðili flugvallar, heimilisfang, sími, símbréf, AFS	Flugstöðir ohf. / ISAVIA 600 Akureyri, Iceland Telephone: +354 424 4370 Telefax: +354 461 4370 AFTN: BICAYAYT Commercial Telegraph: CIVILAIR REYKJAVIK BIGR AFIS: Tel: +354 467 3130
6	Types of traffic permitted Leyfð flugumferð	IFR-VFR
7	Remarks Athugasemdir	NIL

BIGR AD 2.3 Þjónustutímar

BIGR AD 2.3 Operational hours

ENGLISH/ ICELANDIC		
1	AD Administration Rekstraraðili flugvallar	During Office Hours 09:00-16:00 Á skrifstofutíma 09:00-16:00
2	Customs and immigration Tollur og útlendingaeftirlit	NIL
3	Health and sanitation Heilsugæsla	NIL
4	AIS Briefing Office Kynningarstofa upplýsingaþjónusta	NIL
5	ATS Reporting Office (ARO) Tilkynningarstöð flugumferðarþjónustu	NIL
6	MET Briefing Office Kynningastofa veðurþjónustu	MET office by telephone Veðurstofa Íslands, símleiðis
7	ATS Flugumferðarþjónusta	HS - See AIP Supplement Möguleg þjónusta - Sjá AIP Supplement
8	Fuelling Eldsneyti	NIL
9	Handling Afgreiðsla	O/R Skv. beiðni

ICELANDIC

ENGLISH

10	Security	NIL
	Öryggisgæsla	
11	De-icing	NIL
	Afising	
12	Remarks	NIL
	Athugasemdir	

BIGR AD 2.4 Afgreiðsla og tæki

BIGR AD 2.4 Handling services and facilities

ENGLISH/ ICELANDIC		
1	Cargo handling facilities:	Limited - PN
	Fraktmeðhöndlun	Takmörkuð - Með fyrirfram beiðni
2	Fuel / oil types	NIL
	Eldsneytistegundir / olíur	
3	Fuelling facilities / capacity	NIL
	Eldsneytisbúnaður / magn	
4	De-icing facilities	NIL
	Afisingarbúnaður	
5	Hanger space available for visiting aircraft	NIL
	Flugskýlispláss fyrir aðkomuvélar	
6	Repair facilities for visiting aircraft	NIL
	Viðhaldsmöguleikar fyrir aðkomuvélar	
7	Remarks	No oxygen or related servicing Ekkert súrefni eða hliðstæð þjónusta
	Athugasemdir	

BIGR AD 2.5 Aðstaða farþega

BIGR AD 2.5 Passenger facilities

ENGLISH/ ICELANDIC		
1	Hotels	Available in town / Fáanleg í bænum
	Hótel	
2	Airport Restaurant	NIL
	Veitingastaðir á flugvelli	
3	Transportation	Taxi/bus available on-request
	Fólksflutningar	Leigubílar/rútur samkvæmt beiðni
4	Medical facilities	NIL
	Hjúkrunaraðstaða	
5	Bank and Post Office	In Town / í bænum
	Banki og pósthús	
6	Tourist Office	NIL
	Ferðaskrifstofa	
7	Remarks	NIL
	Athugasemdir	

BIGR AD 2.6 Björgun og eldvarnir

BIGR AD 2.6 Rescue and fire fighting services

ENGLISH/ ICELANDIC		
1	AD category for fire fighting	CAT III
	Gæðaflokkur flugvallarslökkviliðs	
2	Rescue equipment	Yes / Já
	Björgunartæki	
3	Capability for removal of disabled aircraft	Crane in town Krani í þorpi
	Möguleiki á að fjarlægja bilaðar flugvélar	
4	Remarks	NIL
	Athugasemdir	

BIGR AD 2.7 Árstíðarbundnar hreinsanir

BIGR AD 2.7 Seasonal Availability - Clearing

ENGLISH/ ICELANDIC		
1	Types of Equipment	See snow plan AD 1.2.2 Sjá kafla AD 1.2.2 um vetrarviðhald
	Tegund tækja	
2	Clearance priorities	See snow plan AD 1.2.2 Sjá kafla AD 1.2.2 um vetrarviðhald
	Forgangsröð hreinsunar	
3	Remarks	All seasons, winter conditions from Oct. to Apr. Allt árið, vetrartími frá okt. til apr.
	Athugasemdir	

BIGR AD 2.8 Hlað, akbrautir og staðsetning gátstaða

BIGR AD 2.8 Aprons, taxiways and check locations data

ENGLISH/ ICELANDIC		
1	Apron surface and strength	Asphalt stabilized gravel PCN 15 Tjörubundin grús PCN 15
	Yfirborð staðis og styrkur	
2	Taxiway width, surface and strength	20 m - asphalt stabilized gravel PCN 15 20 m - tjörubundin grús PCN 15
	Breidd akbrautar, yfirborð og styrkur	
3	ACL location and elevation	To be notified / Verður tilkynnt
	Staðsetning og hæð fyrir hæðarmælisathugun	
4	VOR/INS checkpoints	NIL
	VOR/INS gátstaðir	
5	Remarks	NIL
	Athugasemdir	

BIGR AD 2.9 Leiðbeininga- og upplýsingaskilti og merkingar

BIGR AD 2.9 Surface movement guidance and control system and markings

ENGLISH/ ICELANDIC		
1	TWY guidelines	Yes / já
	Akbrautamerkingar	
2	RWY & TWY markings and LGT	Yes / já
	Flugbrautar- og akbrautamerkingar og ljós	
3	Stop bars	NIL
	Stöðvunarljós	
4	Remarks	NIL
	Athugasemdir	

BIGR AD 2.10 Flugvallarhindranir

BIGR AD 2.10 Aerodrome Obstacles

In approach/TKOF areas			In circling area and at AD		Remarks
1			2		
RWY/ Area affected	Obstacle type Elevation Markings/LGT	Coordinates	Obstacle type Elevation Markings/ LGT	Coordinates	3
a	b	c	a	b	
OBSTRUCTIONS IN APAPI APPROACH SECTORS.					
To be notified / Verður tilkynnt					

BIGR AD 2.11 Veittar veðurupplýsingar

BIGR AD 2.11 Meteorological information provided

ENGLISH/ ICELANDIC		
1	Associated MET Office Veðurstofa Íslands Bústaðavegi 9 150 Reykjavík Ísland Sími : +354 522 6000 Símbref: 522 6002 TELEX: METEO REYKJAVIK AFS: BIRKMYX Netfang: office@vedur.is Veffang: http://www.vedur.is Veðurathuganir líka gerðar á flugvelli	Meteorological Office Veðurstofa Íslands Bústaðavegi 9 IS-150 Reykjavík Iceland. Telephone: +354 522 6000 Telefax: + 354 522 6002 TELEX: METEO REYKJAVIK AFS: BIRKMYX E-mail address: office@vedur.is Internet address: http://www.vedur.is Observations also taken locally at the aerodrome
2	Hours of service Þjónustutími	H24
3	Office responsible for TAF preparation Skrifstofa ábyrg fyrir TAF Periods of validity Gildistími	MET Office / Veðurstofa Íslands See GEN 3.5.4.1 / Sjá GEN 3.5.4.1
4	Type of landing forecast Tegund upplýsinga fyrir landingu	—
5	Briefing/consultation provided Kynning/ráðgjöf veitt	Telephone / sími: +354 522 6000
6	Flight documentation Fluggögn Language(s) used Tungumál	Charts available via FAX Kort möguleg með símbrefi English and Icelandic/ Enska og íslenska
7	Charts and other information available for briefing or consultation Kort og aðrar upplýsingar tiltækar fyrir kynningu og ráðgjöf	S, U, P, W, T
8	Supplementary equipment available for providing information Önnur tæki til upplýsingaöflunar	NIL
9	ATS units provided with information Flugumferðarþjónusta sem fær upplýsingarnar	
10	Additional information (limitation of service, etc.) Viðbótarupplýsingar (takmörkun þjónustu)	NIL

Other Met Data Provided

To be notified / Verður tilkynnt

BIGR AD 2.12 Sérkenni flugbrauta

BIGR AD 2.12 Runway physical characteristics

Designations RWY NR	TRUE/MAG BRG	Dimensions of RWY (M)	Strength (PCN)/surface of RWY and SWY	THR coordinates	THR elevation & highest elevation of TDZ of precision APP RWY	Slope of RWY- SWY
1	2	3	4	5	6	7
18	159.84° / 176°	1030x23	Asphalt stabilized gravel / Tjörubundin grús PCN 15	663301.41N 0180116.71W	81FT	
36	339.84° / 356°	1030x23	Asphalt stabilized gravel / Tjörubundin grús PCN 15	663230.21N 0180047.96W	75FT	

Designations RWY NR	SWY dimensions (M)	CWY dimensions (M)	Strip dimensions (M)	OFZ
1	8	9	10	11
18	NIL	NIL	1150x80	
36	NIL	NIL	1150x80	

Designations RWY NR	Remarks
1	12
18	NIL
36	

BIGR AD 2.13 Skilgreindar brautarlengdir

BIGR AD 2.13 Declared distances

RWY Designator	TORA (M)	TODA (M)	ASDA (M)	LDA (M)	Remarks
1	2	3	4	5	6
18	1030	1030	1030	1030	
36	1030	1030	1030	1030	

BIGR AD 2.14 Aðflugs- og flugbrautarljós

BIGR AD 2.14 Approach and runway lighting

RWY Designator	APCH LGT type LEN INTST	THR LGT colour WBAR	VASIS (MEHT) PAPI	TDZ LGT LEN	RWY Centre Line LGT Length, spacing, colour, INTST	RWY edge LGT LEN, spacing, colour, INTST	RWY End LGT colour WBAR	SWY LGT LEN (M) colour	Remarks
1	2	3	4	5	6	7	8	9	10
18	NIL	Green	PAPI 3° (39,5')	-	-	LIH W	R	-	PAPI RWY 18 only useable within 8° east of centreline
36	Lead in lights 450 m before THR	Green	PAPI 3° (40,3')	-	-	LIH W	R	-	

BIGR AD 2.15 Önnur lýsing og vararafmagn

BIGR AD 2.15 Other lighting, secondary power supply

ENGLISH/ ICELANDIC		
1	ABN/IBN location, characteristics and hours of operation Flugvallarviti - staðsetning	NIL
2	WDI location and LGT Anemometer location and LGT Vindmælir	TDZ RWY 18/36 Við snertisvæði brauta 18/36.
3	TWY edge Akbrautarkantljós	Yes / já
4	Secondary power supply / switch-over time Vararafmagn / skiptitími	NIL
5	Remarks: Athugasemdir	NIL

BIGR AD 2.16 Lendingarsvæði fyrir þyrlur

BIGR AD 2.16 Helicopter landing area

ENGLISH/ ICELANDIC		
1	Coordinates TLOF or THR of FATO Staðsetning landingarsvæðis	On runway / Á braut
2	TLOF and/or FATO elevation M/FT Hæð á landingarstað M/FT	
3	TLOF and FATO area dimensions, surface, strength, marking Stærð, yfirborð, styrkleiki, merking	Runway Asphalt stabilized gravel PCN 15/ Tjörubundin grús PCN 15
4	True and MAG BRG of FATO Réttstefna og segulstefna á FATO	NIL
5	Declared distance available Skilgreind lengd	NIL
6	Remarks Athugasemdir	NIL

BIGR AD 2.17 Loftrými flugumferðarþjónustu

BIGR AD 2.17 ATS airspace

ENGLISH/ ICELANDIC		
1	Designation and lateral limits Heiti og útlínur	Uncontrolled airspace/ Óstjórnað loftrými
2	Vertical limits Hæðarmörk	NIL
3	Airspace classification Flokkun loftrýmis	Class G / Flokkur G
4	ATS unit call sign language(s) Kallmerki og tungumál notað í flugumferðarþjónustu	Grimsey AFIS - Icelandic / íslenska
5	Transition altitude Skiptihæð	7000FT MSL
10	Remarks Athugasemdir	NIL

BIGR AD 2.18 ATS fjarskiptabúnaður

BIGR AD 2.18 ATS communication facilities

Service designation	Call sign	Frequency		Hours of Operation	Remarks
		Transmit	Receives		
1	2	3		4	5
AFIS	Grimsey AFIS	118.1		See AIP Supplement	Reykjavik Control 119.7

BIGR AD 2.19 Flugleiðsögu- og aðflugsbúnaður

BIGR AD 2.19 Radio navigation and landing aids

Type of aid, CAT of ILS/MLS (For VOR/ILS/MLS, give VAR)	ID	Frequency	Hours of operation	Site of transmitting antenna coordinates	Elevation of DME transmitting antenna	Remarks
1	2	3	4	5	6	7
NDB Grimsey	GR	308 kHz	H24	663141.99N 0175859.21W		

BIGR AD 2.20 Svæðisbundnar umferðarreglur

NIL

BIGR AD 2.21 Flugaðferðir til hávaðamildunar

NIL

BIGR AD 2.22 Flugaðferðir

BIGR AD 2.23 Viðbótarupplýsingar

NIL

BIGR AD 2.20 Local traffic regulations

NIL

BIGR AD 2.21 Noise abatement procedures

NIL

BIGR AD 2.22 Flight procedures

BIGR AD 2.23 Additional Information

NIL

**BIGR AD 2.24 Kort sem tilheyra
Grimseyjarflugvelli**

**BIGR AD 2.24 Chart Related to Grimsey
Aerodrome**

Blaðsíða / Page	Kort / Chart
BIGR AD 2.24.10.1-1	RNAV (GNSS) RWY 36
BIGR AD 2.24.10.1-3	Instrument Approach Chart - ICAO Circling

AIP ICELAND
FLUGMÁLAHANDBÓK

AD ELEV 81

BIGR
11 APR 2008

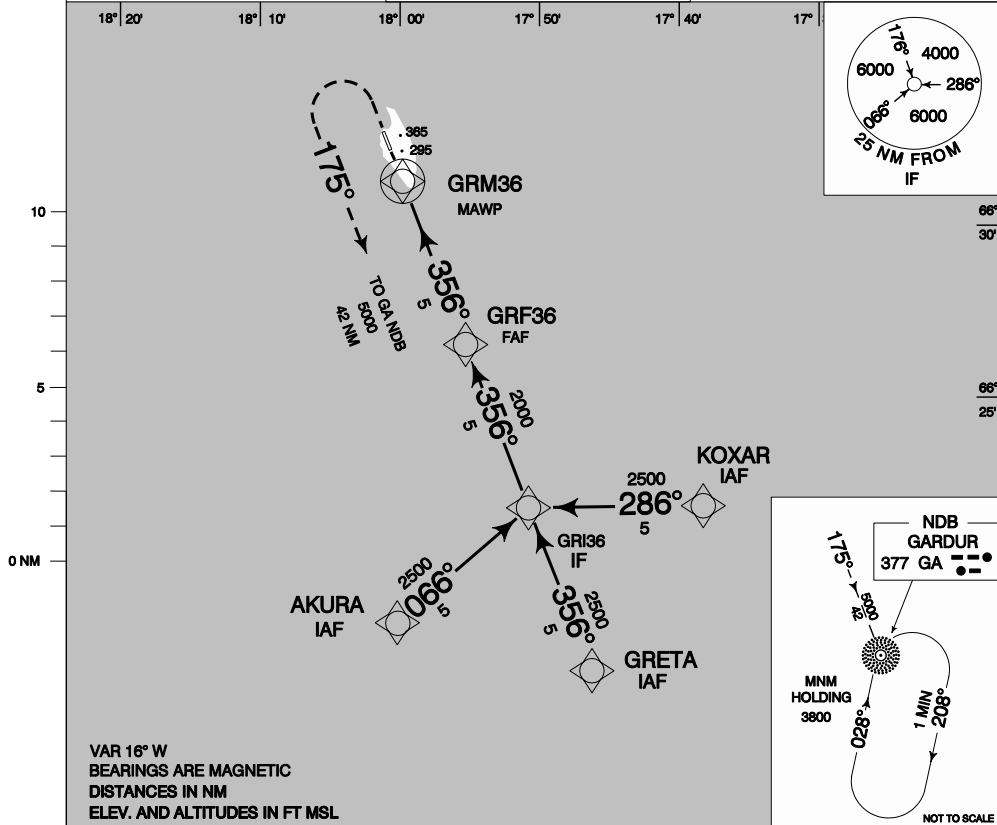
**INSTRUMENT APPROACH
CHART - ICAO**

GRIMSEY AFIS 118.1
ACC 119.7

GRIMSEY

RNAV (GNSS) RWY 36

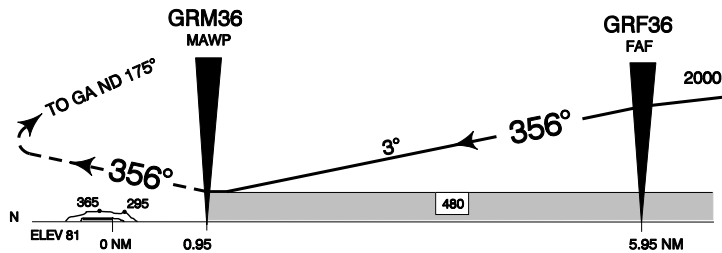
SCALE 1: 400.000



MISSED APPROACH:
CLIMB STRAIGHT AHEAD UNTIL 1000.
TURN LEFT CLIMBING TO 5000
PROCEED TO GA NDB AND HOLD

TRANS LEVEL BY ATC
TRANS ALT 7000

CHANGES: EDITORIAL



OCHA/(H)		A	B
STRAIGHT-IN APPROACH	RWY 36	490 / (416)	
CIRCLING		490	
		CIRCLE ONLY WEST OF RWY	

ICELANDIC CAA / FLUGMÁLASTJÓRN ÍSLANDS

Pub. by: ISAVIA / Útg.: FLUGSTOÐIR ohf

THIS PAGE INTENTIONALLY LEFT BLANK

THIS PAGE INTENTIONALLY LEFT BLANK

BIGR AD 2.25 Leiðsöguhnit

2.25.1 GRÍMSEY GPS Circling

BIGR AD 2.25 Way Point List

2.25.1 Grimsey GPS Circling

Transition Waypoints

AKURA TRANSITION

CODING

DISPLAY

AKURA (IAF)	66 19 02.52N	018 00 54.70W	66 19.04N	018 00.91W
GRI36 (IF)	66 22 15.03N	017 51 25.33W	66 22.25N	017 51.42W
GRF36 (FAF)	66 26 55.86N	017 55 41.15W	66 26.93N	017 55.69W
GRM36 (MAWP)	66 31 36.56N	017 59 58.57W	66 31.61N	017 59.98W

GRETA TRANSITION

GRETA (IAF)	66 17 34.09N	017 47 11.10W	66 17.57N	017 47.19W
GRI36 (IF)	66 22 15.03N	017 51 25.33W	66 22.25N	017 51.42W
GRF36 (FAF)	66 26 55.86N	017 55 41.15W	66 26.93N	017 55.69W
GRM36 (MAWP)	66 31 36.56N	017 59 58.57W	66 31.61N	017 59.98W

KOXAR TRANSITION

KOXAR (IAF)	66 22 14.63N	017 39 00.30W	66 22.24N	017 39.01W
GRI36 (IF)	66 22 15.03N	017 51 25.33W	66 22.25N	017 51.42W
GRF36 (FAF)	66 26 55.86N	017 55 41.15W	66 26.93N	017 55.69W
GRM36 (MAWP)	66 31 36.56N	017 59 58.57W	66 31.61N	017 59.98W

THIS PAGE INTENTIONALLY LEFT BLANK