

**BIBD AD 2.1 Staðsetning og heiti
flugvallar**

**BIBD AD 2.1 Aerodrome location
indicator and name**

BÍLDUDALUR / Bildudalur

**BIBD AD 2.2 Landfræðilegar og
stjórnunarupplýsingar
flugvalla**

**BIBD AD 2.2 Aerodrome geographical
and administrative data**

ENGLISH/ ICELANDIC		
1	ARP coordinates and site at Aerodrome Hnattstaða flugvalla	653829N 0233246W
2	Direction and distance from the CITY Stefna og fjarlægð frá borg	4.5 NM - 140° GEO
3	Elevation / Reference temperature Landhæð / viðmiðunarhitastig	18 FT
4	MAG VAR / Annual change Misvísun / árleg breyting	19°W (2005) 12 min decreasing
5	AD Administration, address, telephone, telefax, AFS Rekstraraðili flugvallar, heimilisfang, sími, símbref, AFS	Flugstöðir ohf. / ISAVIA Ísafjarðarflugvelli 400 Ísafirði, Iceland Telephone: +354 456 3640 Telefax: +354 456 4606 AFTN: BICAYAYT Commercial Telegraph: CIVILAIR REYKJAVIK BIBD control tower / BIBD flugturn: Tel: +354 456 2266 e-mail: finnbjorn@flugstodir.is
6	Types of traffic permitted Leyfð flugumferð	VFR
7	Remarks Athugasemdir	NIL

BIBD AD 2.3 Þjónustutímar

BIBD AD 2.3 Operational hours

ENGLISH/ ICELANDIC		
1	AD Administration Rekstraraðili flugvallar	During Office Hours 09:00-16:00 Á skrifstofutíma 09:00-16:00
2	Customs and immigration Tollur og útlendingaeftirlit	NIL
3	Health and sanitation Heilsugæsla	In town/í bænum
4	AIS Briefing Office Kynningarstofa upplýsingaþjónusta	NIL
5	ATS Reporting Office (ARO) Tilkynningarstöð flugumferðarþjónustu	NIL
6	MET Briefing Office Kynningastofa veðurþjónustu	MET office by telephone Veðurstofa Íslands, símleiðis
7	ATS Flugumferðarþjónusta	HS - See AIP Supplement Möguleg þjónusta - Sjá AIP Supplement
8	Fuelling Eldsneyti	All days except Saturdays O/R / Alla daga nema laugardaga skv. beiðni

ICELANDIC

ENGLISH

9	Handling	O/R (0800-1600)
	Afgreiðsla	Skv. beiðni (0800-1600)
10	Security	NIL
	Öryggisgæsla	
11	De-icing	NIL
	Afising	
12	Remarks	NIL
	Athugasemdir	

BIBD AD 2.4 Afgreiðsla og tæki

BIBD AD 2.4 Handling services and facilities

ENGLISH/ ICELANDIC		
1	Cargo handling facilities:	Normal facilities available O/R
	Fraktmeðhöndlun	Venjulegur búnaður fyrir hendi skv. beiðni
2	Fuel / oil types	
	Eldsneytistegundir / olíur	JET-A1
3	Fuelling facilities / capacity	39L per. min
	Eldsneytisbúnaður / magn	39L á min.
4	De-icing facilities	NIL
	Afisingarbúnaður	
5	Hanger space available for visiting aircraft	NIL
	Flugskýlipláss fyrir aðkomuvélar	
6	Repair facilities for visiting aircraft	NIL
	Viðhaldsmöguleikar fyrir aðkomuvélar	
7	Remarks	No oxygen or related servicing
	Athugasemdir	Ekkert súrefni eða hliðstæð þjónusta

BIBD AD 2.5 Aðstaða farþega

BIBD AD 2.5 Passenger facilities

ENGLISH/ ICELANDIC		
1	Hotels	Available in town / Fáanleg í bænum
	Hótel	
2	Airport Restaurant	NIL
	Veitingastaðir á flugvelli	
3	Transportation	Taxi/bus available on-request
	Fólksflutningar	Leigubílar/rútur samkvæmt beiðni
4	Medical facilities	NIL
	Hjúkrunaraðstaða	
5	Bank and Post Office	In Town / Í bænum
	Banki og pósthús	
6	Tourist Office	NIL
	Ferðaskrifstofa	
7	Remarks	NIL
	Athugasemdir	

BIBD AD 2.6 Björgun og eldvarnir

BIBD AD 2.6 Rescue and fire fighting services

ENGLISH/ ICELANDIC		
1	AD category for fire fighting	CAT III
	Gæðaflokkur flugvallarslökkviliðs	
2	Rescue equipment	Yes / Já
	Björgunartæki	
3	Capability for removal of disabled aircraft	Crane and trailer in town Krani og tengivagn í þorpi
	Möguleiki á að fjarlægja bilaðar flugvélar	
4	Remarks	NIL
	Athugasemdir	

BIBD AD 2.7 Árstíðarbundnar hreinsanir

BIBD AD 2.7 Seasonal Availability - Clearing

ENGLISH/ ICELANDIC		
1	Types of Equipment	See snow plan AD 1.2.2 Sjá kafla AD 1.2.2 um vetrarviðhald
	Tegund tækja	
2	Clearance priorities	See snow plan AD 1.2.2 Sjá kafla AD 1.2.2 um vetrarviðhald
	Forgangsröð hreinsunar	
3	Remarks	All seasons, winter conditions from Oct. to Apr. Allt árið, vetrartími frá okt. til apr.
	Athugasemdir	

BIBD AD 2.8 Hlað, akbrautir og staðsetning gátstaða

BIBD AD 2.8 Aprons, taxiways and check locations data

ENGLISH/ ICELANDIC		
1	Apron surface and strength	Asphalt stabilized gravel PCN 15 Tjörubundin grús PCN 15
	Yfirborð staðis og styrkur	
2	Taxiway width, surface and strength	25M, wide asphalt stabilized gravel PCN 15 25m, tjörubundin grús PCN 15
	Breidd akbrautar, yfirborð og styrkur	
3	ACL location and elevation	To be notified / Verður tilkynnt
	Staðsetning og hæð fyrir hæðarmælisathugun	
4	VOR/INS checkpoints	NIL
	VOR/INS gátstaðir	
5	Remarks	NIL
	Athugasemdir	

BIBD AD 2.9 Leiðbeininga- og upplýsingaskilti og merkingar

BIBD AD 2.9 Surface movement guidance and control system and markings

ENGLISH/ ICELANDIC		
1	TWY guidelines	NIL
	Akbrautamerkingar	
2	RWY & TWY markings and LGT	Yes Já
	Flugbrautar- og akbrautamerkingar og ljós	
3	Stop bars	NIL
	Stöðvunarljós	
4	Remarks	
	Athugasemdir	

BIBD AD 2.10 Flugvallarhindranir

BIBD AD 2.10 Aerodrome Obstacles

In approach/TKOF areas			In circling area and at AD		Remarks
1			2		
RWY/ Area affected	Obstacle type Elevation Markings/LGT	Coordinates	Obstacle type Elevation Markings/ LGT	Coordinates	OBSTRUCTIONS IN APAPI APPROACH SECTORS.
a	b	c	a	b	
To be notified / Verður tilkynnt					

BIBD AD 2.11 Veittar veðurupplýsingar

BIBD AD 2.11 Meteorological information provided

ENGLISH/ ICELANDIC	
1	<p>Associated MET Office</p> <p>Veðurstofa Íslands Bústaðavegi 9 150 Reykjavík Ísland Sími : +354 522 6000 Símbref: 522 6002 TELEX: METEO REYKJAVIK AFS: BIRKMYX Netfang: office@vedur.is Veffang: http://www.vedur.is Veðurathuganir líka gerðar á flugvelli</p>
	<p>Meteorological Office</p> <p>Veðurstofa Íslands Bústaðavegi 9 IS-150 Reykjavík Iceland. Telephone: +354 522 6000 Telefax: + 354 522 6002 TELEX: METEO REYKJAVIK AFS: BIRKMYX E-mail address: office@vedur.is Internet address: http://www.vedur.is Observations also taken locally at the aerodrome</p>
2	<p>Hours of service</p> <p>þjónustutími</p>
	H24
3	<p>Office responsible for TAF preparation</p> <p>Skrifstofa ábyrg fyrir TAF</p> <p>Periods of validity</p> <p>Gildistími</p>
	<p>MET Office / Veðurstofa Íslands</p> <p>See GEN 3.5.4.1 / Sjá GEN 3.5.4.1</p>
4	<p>Type of landing forecast</p> <p>Tegund upplýsinga fyrir landingu</p>
	—
5	<p>Briefing/consultation provided</p> <p>Kynning/ráðgjöf veitt</p>
	Telephone / sími: +354 522 6000
6	<p>Flight documentation</p> <p>Fluggögn</p> <p>Language(s) used</p> <p>Tungumál</p>
	<p>Charts available via FAX Kort möguleg með símbrefi</p> <p>English and Icelandic/ Enska og íslenska</p>
7	<p>Charts and other information available for briefing or consultation</p> <p>Kort og aðrar upplýsingar tiltækar fyrir kynningu og ráðgjöf</p>
	S, U, P, W, T
8	<p>Supplementary equipment available for providing information</p> <p>Önnur tæki til upplýsingaöflunar</p>
	NIL
9	<p>ATS units provided with information</p> <p>Flugumferðarþjónusta sem fær upplýsingarnar</p>
10	<p>Additional information (limitation of service, etc.)</p> <p>Viðbótarupplýsingar (takmörkun þjónustu)</p>
	NIL

Other Met Data Provided

To be notified / Verður tilkynnt

BIBD AD 2.12 Sérkenni flugbrauta

BIBD AD 2.12 Runway physical characteristics

Designations RWY NR	TRUE/MAG BRG	Dimensions of RWY (M)	Strength (PCN)/surface of RWY and SWY	THR coordinates	THR elevation & highest elevation of TDZ of precision APP RWY	Slope of RWY- SWY
1	2	3	4	5	6	7
05	027.74° / 047°	940X30	PCN 15 / Asphalt stabilized gravel	653815.20N 0233303.10W	11	
23	207.75° / 227	940X30	PCN 15 / Asphalt stabilized gravel	653842.06N 0233228.89W	26	

Designations RWY NR	SWY dimensions (M)	CWY dimensions (M)	Strip dimensions (M)	OFZ
1	8	9	10	11
05	NIL	NIL	1060X60	
23	NIL	NIL	1060X60	

Designations RWY NR	Remarks
1	12
	NIL

BIBD AD 2.13 Skilgreindar brautarlengdir

BIBD AD 2.13 Declared distances

RWY Designator	TORA (M)	TODA (M)	ASDA (M)	LDA (M)	Remarks
1	2	3	4	5	6
05	940	940	940	940	
23	940	940	940	940	

BIBD AD 2.14 Aðflugs- og flugbrautarljós

BIBD AD 2.14 Approach and runway lighting

RWY Designator	APCH LGT type LEN INTST	THR LGT colour WBAR	VASIS (MEHT) PAPI	TDZ LGT LEN	RWY Centre Line LGT Length, spacing, colour, INTST	RWY edge LGT LEN, spacing, colour, INTST	RWY End LGT colour WBAR	SWY LGT LEN (M) colour	Remarks
1	2	3	4	5	6	7	8	9	10
05	NIL	THR LIH GREEN	APAPI			W EDGE			THR ID LGT RWY 05/23 FLG WHITE
23	NIL	THR LIH GREEN	APAPI			W EDGE			

BIBD AD 2.15 Önnur lýsing og vararafmagn

BIBD AD 2.15 Other lighting, secondary power supply

ENGLISH/ ICELANDIC		
1	ABN/IBN location, characteristics and hours of operation Flugvallarviti - staðsetning	NIL
2	WDI location and LGT Anemometer location and LGT Vindmælir	At TDZ / Við snertisvæði brautar
3	TWY edge Akbrautarkantljós	NIL
4	Secondary power supply / switch-over time Vararafmagn / skiptitími	NIL
5	Remarks: Athugasemdir	NIL

BIBD AD 2.16 Lendingarsvæði fyrir þyrlur

BIBD AD 2.16 Helicopter landing area

ENGLISH/ ICELANDIC		
1	Coordinates TLOF or THR of FATO Staðsetning landingarsvæðis	Landing area at end of rwy 23/ Flugbrautarendi 23
2	TLOF and/or FATO elevation M/FT Hæð á landingarstað M/FT	26 FT
3	TLOF and FATO area dimensions, surface, strength, marking Stærð, yfirborð, styrkleiki, merking	Runway Asphalt stabilized gravel PCN 15/ Tjörubundin grús PCN 15
4	True and MAG BRG of FATO Réttstefna og segulstefna á FATO	NIL
5	Declared distance available Skilgreind lengd	NIL
6	Remarks Athugasemdir	NIL

BIBD AD 2.17 Loftrými flugumferðarþjónustu

BIBD AD 2.17 ATS airspace

ENGLISH/ ICELANDIC		
1	Designation and lateral limits Heiti og útlínur	Uncontrolled airspace/ Óstjórnað loftrými
2	Vertical limits Hæðarmörk	NIL
3	Airspace classification Flokkun loftrýmis	Class G / Flokkur G
4	ATS unit call sign language(s) Tungumál notað í flugumferðarþjónustu	Icelandic / íslenska
5	Transition altitude Skiptihæð	7000FT MSL
10	Remarks Athugasemdir	NIL

BIBD AD 2.18 ATS fjarskiptabúnaður

BIBD AD 2.18 ATS communication facilities

Service designation	Call sign	Frequency		Hours of Operation	Remarks
		Transmit	Receives		
1	2	3		4	5
AFIS	Bildudalur Radio	119.1		See AIP Supplement	Reykjavik Control 119.7

BIBD AD 2.19 Flugleiðsögu- og aðflugsbúnaður

BIBD AD 2.19 Radio navigation and landing aids

Type of aid, CAT of ILS/MLS (For VOR/ILS/MLS, give VAR)	ID	Frequency	Hours of operation	Site of transmitting antenna coordinates	Elevation of DME transmitting antenna	Remarks
1	2	3	4	5	6	7
Selárdalur NDB/MARKER	SB	310 kHz	H24	654718.59N 0235927.07W		

BIBD AD 2.20 Svæðisbundnar umferðarreglur

NIL

BIBD AD 2.20 Local traffic regulations

NIL

BIBD AD 2.21 Flugaðferðir til hávaðamildunar

NIL

BIBD AD 2.21 Noise abatement procedures

NIL

BIBD AD 2.22 Flugaðferðir

BIBD AD 2.22 Flight procedures

BIBD AD 2.23 Viðbótarupplýsingar

NIL

BIBD AD 2.23 Additional Information

NIL

BIBD AD 2.24 Kort sem tilheyra BÍldudalsflugvelli

BIBD AD 2.24 Chart Related to Bildudalur Aerodrome

IS	Page	Chart
----	------	-------

BIBD AD 2.24.10.1-1

Instrument Approach Chart - ICAO
RNAV (GNSS) Circling Approach Course
013°

THIS PAGE INTENTIONALLY LEFT BLANK

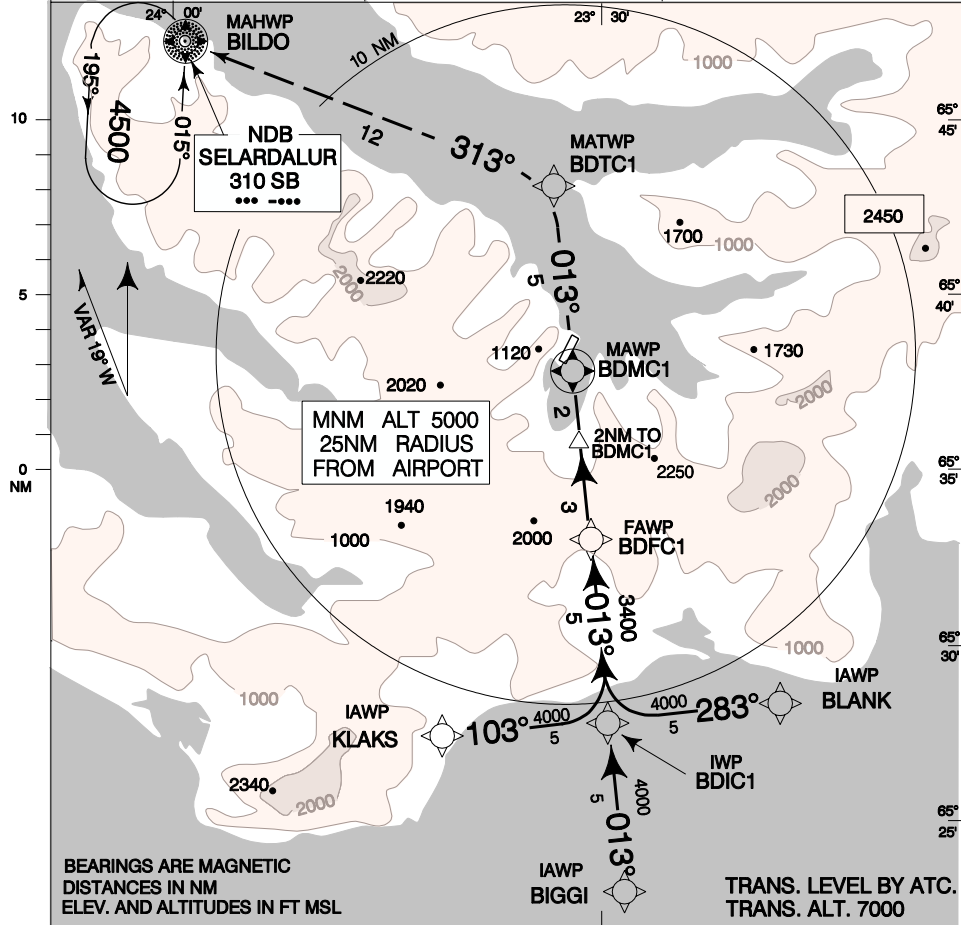
AIP ICELAND
FLUGMÁLAHANDBÓK

ELEV 26	
ARP 65°38'29" N 23°32'46" W	
BILDUDALUR AFIS	119.1
ACC	119.7

BIBD
4 AUG 2005

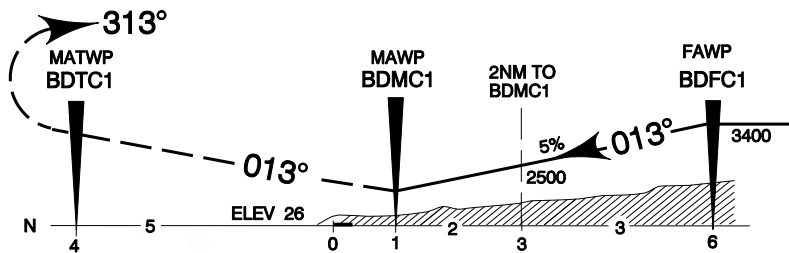
**INSTRUMENT APPROACH
CHART**
SCALE 1:400 000

BILDUDALUR
RNAV (GNSS) CIRCLING
APPROACH COURSE 013°



MISSED APPROACH: CLIMB ON TRACK 013°. AT 2300 OR NO LATER THAN BDTC1 TURN LEFT ON TRACK 313° TO SB NDB / BILDO AND HOLD AT 4500.

CHANGES: GNSS FIX NAMES



OCA/(H)	A	B
MNM CIRCLING	1900/(1874)	

FLUGMÁLASTJÓRN ÍSLANDS

ICELANDIC CAA

THIS PAGE INTENTIONALLY LEFT BLANK

BIBD AD 2.25 Leiðsöguhnit

2.25.1 BÍLDUDALUR GPS Circling

BIBD AD 2.25 Way Point List

2.25.1 Bildudalur GPS Circling

Transition Waypoints

KLAKS TRANSITION

	CODING		DISPLAY	
KLAKS (IAF)	65 27 14.04N	023 41 41.07W	65 27.23N	023 41.68W
BDIC1 (IF)	65 27 45.64N	023 29 42.81W	65 27.76N	023 29.71W
BDFC1 (FAF)	65 32 44.02N	023 30 57.78W	65 32.73N	023 30.96W
BDMC1 (MAPt)	65 37 42.40N	023 32 12.99W	65 37.71N	023 32.22W
BDTC1 (MATF)	65 42 40.78N	023 33 28.47W	65 42.68N	023 33.47W
BILDO (MAHF)	65 47 18.59N	023 59 27.07W	65 47.31N	023 59.45W

BIGGI TRANSITION

BIGGI (IAF)	65 22 47.26N	023 28 28.02W	65 22.79N	023 28.47W
BDIC1 (IF)	65 27 45.64N	023 29 42.81W	65 27.76N	023 29.71W
BDFC1 (FAF)	65 32 44.02N	023 30 57.78W	65 32.73N	023 30.96W
BDMC1 (MAPt)	65 37 42.40N	023 32 12.99W	65 37.71N	023 32.22W
BDTC1 (MATF)	65 42 40.78N	023 33 28.47W	65 42.68N	023 33.47W
BILDO (MAHF))	65 47 18.59N	023 59 27.07W	65 47.31N	023 59.45W

BLANK TRANSITION

BLANK (IAF)	65 28 16.30N	023 17 44.08W	65 28.27N	023 17.74W
BDIC1 (IF)	65 27 45.64N	023 29 42.81W	65 27.76N	023 29.71W
BDFC1 (FAF)	65 32 44.02N	023 30 57.78W	65 32.73N	023 30.96W
BDMC1 (MAPt)	65 37 42.40N	023 32 12.99W	65 37.71N	023 32.22W
BDTC1 (MATF)	65 42 40.78N	023 33 28.47W	65 42.68N	023 33.47W
BILDO (MAHF)	65 47 18.59N	023 59 27.07W	65 47.31N	023 59.45W

THRESHOLD COORDINATES

	CODING		DISPLAY	
THR RWY 05	65 38 15.20N	023 33 03.10W	65 38.25N	023 33.05W
THR RWY 23	65 38 42.06N	023 32 28.89W	65 38.70N	023 32.48W

THIS PAGE INTENTIONALLY LEFT BLANK