

**BIVO AD 2.1 Staðarauðkenni og heiti
flugvallar**

**BIVO AD 2.1 Aerodrome location
indicator and name**

BIVO - VOPNAFJÖRÐUR / Vopnafjordur

**BIVO AD 2.2 Landfræðilegar og
stjórnunarupplýsingar
flugvalla**

**BIVO AD 2.2 Aerodrome geographical
and administrative data**

ENGLISH/ ICELANDIC		
1	ARP coordinates and site at Aerodrome Hnattstaða flugvalla	654314N 0145102W
2	Direction and distance from the CITY Stefna og fjarlægð frá borg	2.5 NM - 220°GEO
3	Elevation / Reference temperature Landhæð / viðmiðunarhitastig	10 FT
4	Geoid undulation at AD ELEV PSN Bylgjulögun jarðsporvölu (frá WGS-84 viðmiðunarsporvölu) í hæðarviðmiðunarpunkti flugvallar	212 FT
5	MAG VAR / Annual change Misvísun / árleg breyting	12°W (2010) / 18 min
6	AD Administration, address, telephone, telefax, AFS Rekstraraðili flugvallar, heimilisfang, sími, símbréf, AFS	Isavia ohf. Egilsstadaflugvelli 701 Egilsstadir, Iceland Sími / Tel.: +354 424 4040 Vopnafjordur AFIS: Sími / Tel.: +354 473 1521 Netfang: / E-mail: bivo@isavia.is
7	Types of traffic permitted Leyfð flugumferð	IFR - VFR
8	Remarks Athugasemdir	NIL

BIVO AD 2.3 Þjónustutímar

BIVO AD 2.3 Operational hours

ENGLISH/ ICELANDIC		
1	AD Administration Rekstraraðili flugvallar	During Office Hours Á skrifstofutíma
2	Customs and immigration Tollur og útlendingaeftirlit	NIL
3	Health and sanitation Heilsugæsla	NIL
4	AIS Briefing Office Kynningarstofa upplýsingaþjónusta	NIL
5	ATS Reporting Office (ARO) Tilkynningarstöð flugumferðarþjónustu	NIL
6	MET Briefing Office Kynningastofa veðurþjónustu	H24 - IMO telephone / Sími Veðurstofu Íslands: + 354 522 6000
7	ATS Flugumferðarþjónusta	Sjá - AIP Viðbæti HS - See AIP Supplement Möguleg þjónusta - .Sjá viðbæti við Flugmáláhandbók

8	Fuelling	NIL
	Eldsneyti	
9	Handling	O/R
	Afgreiðsla	Skv. beiðni
10	Security	NIL
	Öryggisgæsla	
11	De-icing	NIL
	Afising	
12	Remarks	NIL
	Athugasemdir	

BIVO AD 2.4 Afgreiðsla og tæki

BIVO AD 2.4 Handling services and facilities

ENGLISH/ ICELANDIC		
1	Cargo handling facilities:	Limited - PN
	Fraktmeðhöndlun	Takmörkuð - Með fyrirfram beiðni
2	Fuel / oil types	NIL
	Eldsneytistegundir / olíur	
3	Fuelling facilities / capacity	NIL
	Eldsneytisbúnaður / magn	
4	De-icing facilities	NIL
	Afisingarbúnaður	
5	Hanger space available for visiting aircraft	NIL
	Flugskýlispláss fyrir aðkomuvélar	
6	Repair facilities for visiting aircraft	NIL
	Viðhaldsmöguleikar fyrir aðkomuvélar	
7	Remarks	No oxygen or related servicing
	Athugasemdir	Ekkert súrefni eða hliðstæð þjónusta

BIVO AD 2.5 Aðstaða farþega

BIVO AD 2.5 Passenger facilities

ENGLISH/ ICELANDIC		
1	Hotels	Available in town
	Hótel	Fáanleg í bænum
2	Airport Restaurant	NIL
	Veitingastaðir á flugvelli	
3	Transportation	Taxi/bus available on-request
	Fólksflutningar	Leigubílar/rútur samkvæmt beiðni
4	Medical facilities	NIL
	Hjúkrunaraðstaða	
5	Bank and Post Office	In Town
	Banki og pósthús	Í bænum
6	Tourist Office	NIL
	Ferðaskrifstofa	
7	Remarks	Flugstöð / Terminal
	Athugasemdir	

BIVO AD 2.6 Björgun og eldvarnir

BIVO AD 2.6 Rescue and fire fighting services

ENGLISH/ ICELANDIC		
1	AD category for fire fighting	ARFF CAT III
	Flokkur björgunar- og slökkviþjónustu	
2	Rescue equipment	Equipment for extraction of victims
	Björgunartæki	Búnaður til björgunar á fastklemmdu fólki
3	Capability for removal of disabled aircraft	Crane and trailer in town
	Möguleiki á að fjarlægja bilaðar flugvélar	Krani og tengivagn í þorpi
4	Remarks	NIL
	Athugasemdir	

BIVO AD 2.7 Árstíðarbundnar hreinsanir

BIVO AD 2.7 Seasonal Availability - Clearing

ENGLISH/ ICELANDIC		
1	Types of Equipment	See snow plan AD 1.2.2
	Tegund tækja	
2	Clearance priorities	See snow plan AD 1.2.2
	Forgangsröð hreinsunar	
3	Remarks	All seasons, winter conditions from Oct. to Apr. Allt árið, vetrartími frá okt. til apr.
	Athugasemdir	

BIVO AD 2.8 Hlað, akbrautir og staðsetning gátstaða

BIVO AD 2.8 Aprons, taxiways and check locations data

ENGLISH/ ICELANDIC		
1	Apron surface and strength	Asphalt stabilized gravel
	Yfirborð staðis og styrkur	
2	Taxiway width, surface and strength	20 m - asphalt stabilized gravel
	Breidd akbrautar, yfirborð og styrkur	
3	ACL location and elevation	Apron 10 FT
	Staðsetning og hæð fyrir hæðarmælisathugun	
4	VOR/INS checkpoints	NIL
	VOR/INS gátstaðir	
5	Remarks	NIL
	Athugasemdir	

BIVO AD 2.9 Leiðbeininga- og upplýsingaskilti og merkingar

BIVO AD 2.9 Surface movement guidance and control system and markings

ENGLISH/ ICELANDIC		
1	TWY guidelines	NIL
	Akbrautarmarkningar	
2	RWY & TWY markings and LGT	RWY Markings: Designation, THR point and centreline TWY Marking: NIL RWY Lights: THR LGT, RWY End LGT and RWY Edge LGT Brautarmarkningar: Brautarheiti, þröskulds- og miðlínúmerkingar Akbrautarmarkningar: Engar Brautarljós: Þröskulds-, enda- og kantljós
	Flugbrautar- og akbrautarmarkningar og ljós	

ICELANDIC

ENGLISH

3	Stop bars	NIL
	Stöðvunarljós	
4	Remarks	NIL
	Athugasemdir	

BIVO AD 2.10 Flugvallarhindranir

BIVO AD 2.10 Aerodrome Obstacles

OBST ID / Designation	OBST type	OBST position	ELEV / HGT	Markings / Type, colour	Remarks
a	b	c	d	e	f
To be notified / Verður tilkynnt					

BIVO AD 2.11 Veittar veðurupplýsingar

BIVO AD 2.11 Meteorological information provided

ENGLISH/ ICELANDIC		
1	Associated MET Office	Icelandic Met Office, see Gen 3.5 /
	Aðalveðurstofa	Veðurstofa Íslands, sjá GEN 3.5
2	Hours of service	H24 / Allan sólarhringinn
	þjónustutími	
3	Office responsible for TAF preparation	TAF not AVBL
	Skrifstofa ábyrg fyrir TAF	
	Periods of validity	NIL
4	Gildistími	
	Type of landing forecast	NIL
5	Tegund landingaspár	
	Briefing/consultation provided	Icelandic Met Office / Veðurstofa Íslands
6	Veðurkynning/ráðfærsla veitt	Telephone / sími: + 354 522 6000
	Flight documentation	METAR, SIGMET,
	Fluggögn	Flight condition over Iceland / Flugveðurskilyrði yfir Íslandi,
	Language(s) used	Low Level Wind/SIGWX forecasts charts,
7	Tungumál	NAT Wind/Temp/ SIGWX forecasts charts.
	Charts and other information available for briefing or consultation	English and Icelandic/ Enska og íslenska
8	Kort og aðrar upplýsingar tiltækar fyrir veðurkynningu eða ráðfærslu	Ref./Tilv.: GEN 3.1, GEN 3.5
	Supplementary equipment available for providing information	http://en.vedur.is/weather/aviation/
9	Önnur tæki til upplýsingaöflunar	http://www.vedur.is/vedur/flugvedur/
	ATS units provided with information	NIL
10	Flugumferðarþjónusta sem fær upplýsingarnar	Vopnafjörður AFIS/ Vopnafjörður flugradió
	Additional information (limitation of service, etc.)	ACC/Flugstjórnarmiðstöð
10	Viðbótarupplýsingar (takmörkun þjónustu)	NIL

BIVO AD 2.12 Sérkenni flugbrauta

BIVO AD 2.12 Runway physical characteristics

Designations RWY NR	TRUE BRG	Dimensions of RWY (M)	Strength (PCN) & surface of RWY and SWY	THR coordinates RWY end coordinates THR geoid undulation	THR elevation & highest elevation of TDZ of precision APP RWY
1	2	3	4	5	6
05	034.82	885x30	— Asphalt Stabilized Gravel / Tjörubundin grús	654302.51N 0145121.41W — GUND 212 FT	THR 9 FT —
23	214.83	885x30	— Asphalt Stabilized Gravel/ Tjörubundin grús	654325.95N 0145041.80W — GUND 212 FT	THR 8 FT —

Designations RWY NR	Slope of RWY-SWY	SWY dimensions (M)	CWY dimensions (M)	Strip dimensions (M)	OFZ	Remarks
1	7	8	9	10	11	12
05	0%	NIL	NIL	1005x80	NIL	NIL
23	0%	NIL	NIL	1005x80	NIL	

BIVO AD 2.13 Skilgreindar brautarlengdir

BIVO AD 2.13 Declared distances

RWY Designator	TORA (M)	TODA (M)	ASDA (M)	LDA (M)	Remarks
1	2	3	4	5	6
05	885	885	885	885	
23	885	885	885	885	

BIVO AD 2.14 Aðflugs- og flugbrautarljós

BIVO AD 2.14 Approach and runway lighting

RWY Designator	APCH LGT type LEN INTST	THR LGT colour WBAR	VASIS (MEHT) PAPI	TDZ LGT LEN	RWY Centre Line LGT Length, spacing, colour, INTST	RWY edge LGT LEN, spacing, colour, INTST	RWY End LGT colour WBAR	SWY LGT LEN (M) colour	Remarks
1	2	3	4	5	6	7	8	9	10
05	NIL	THR LIM Green WBAR ^{1,2}	PAPI 3.0°	NIL	NIL	White LIM ³	Red ⁴ WBAR	NIL	
23	NIL	THR LIM Green WBAR ^{1,2}	PAPI 3.0°	NIL	NIL	White LIM ³	Red ⁴ WBAR	NIL	

¹ Reduced WBAR, 4 ea. LGT on each side of RWY edge / Takmarkaður WBAR, 4 ljós utan hliðarbrúna

² RWY THR ID LGT / Þröskuldarkenniljós

³ RWY edge LGT / Hliðarljós

⁴ RWY end LGT, 4 ea. LGT on each side of RWY edge / Brautarendaljós, 4 ljós utan hliðarbrúna

BIVO AD 2.15 Önnur lýsing og vararafmagn

BIVO AD 2.15 Other lighting, secondary power supply

ENGLISH/ ICELANDIC		
1	ABN/IBN location, characteristics and hours of operation Flugvallarviti - staðsetning	NIL
2	WDI location and LGT Anemometer location and LGT Vindmælir	Close to midpoint of RWY Við miðju brautar
3	TWY edge Akbrautarkantljós	NIL
4	Secondary power supply / switch-over time Vararafmagn / skiptitími	Yes- manual
5	Remarks: Athugasemdir	NIL

BIVO AD 2.16 Lendingarsvæði fyrir þyrlur

BIVO AD 2.16 Helicopter landing area

ENGLISH/ ICELANDIC		
1	Coordinates TLOF or THR of FATO Staðsetning landingarsvæðis	On RWY Flugbraut
2	TLOF and/or FATO elevation M/FT Hæð á landingarstað M/FT	10 FT
3	TLOF and FATO area dimensions, surface, strength, marking Stærð, yfirborð, styrkleiki, merking	RWY: Asphalt Stabilized Gravel, PCN 15/ Flugbraut: Tjörubundin grús PCN 15
4	True and MAG BRG of FATO Réttstefna og segulstefna á FATO	NIL
5	Declared distance available Skilgreind lengd	NIL
6	Remarks Athugasemdir	NIL

BIVO AD 2.17 Loftrými flugumferðarþjónustu

BIVO AD 2.17 ATS airspace

ENGLISH/ ICELANDIC		
1	Designation and lateral limits Heiti og útlínur	Uncontrolled airspace Óstjórnað loftrými
2	Vertical limits Hæðarmörk	NIL
3	Airspace classification Flokkun loftrýmis	Class G / Flokkur G
4	ATS unit call sign and language(s) Kallmerki flugumferðarþjónustu og tungumál	Vopnafjörður flugradió - íslenska / Icelandic
5	Transition altitude Skiptihæð	7000 FT MSL
6	Remarks Athugasemdir	NIL

BIVO AD 2.18 ATS fjarskiptabúnaður

BIVO AD 2.18 ATS communication facilities

Service designation	Call sign	Frequency		Hours of Operation	Remarks
		Transmit	Receives		
1	2	3		4	5
AFIS	VOPNAFJORDUR	118.1		Sjá viðbæti við AIP / See AIP Supplement	NIL

BIVO AD 2.19 Flugleiðsögu- og aðflugsbúnaður

BIVO AD 2.19 Radio navigation and landing aids

Type of aid, CAT of ILS/MLS (For VOR/ILS/MLS, give VAR)	ID	Frequency	Hours of operation	Site of transmitting antenna coordinates	Elevation of DME transmitting antenna	Remarks
1	2	3	4	5	6	7
L	VP	393 KHZ	H24	654259N 0145114W	—	Range 15 NM approx

BIVO AD 2.20 Svæðisbundnar umferðarreglur

NIL

BIVO AD 2.21 Flugaðferðir til hávaðamildunar

NIL

BIVO AD 2.22 Flugaðferðir

NIL

BIVO AD 2.23 Viðbótarupplýsingar

NIL

BIVO AD 2.24 Kort sem tilheyra flugvelli

BIVO AD 2.20 Local traffic regulations

NIL

BIVO AD 2.21 Noise abatement procedures

NIL

BIVO AD 2.22 Flight procedures

NIL

BIVO AD 2.23 Additional Information

NIL

BIVO AD 2.24 Chart Related to Aerodrome

Kort / Chart
Vopnafjordur - Landing Chart
Vopnafjordur RNAV (GNSS) RWY 05
Vopnafjordur NDB RWY 05

THIS PAGE INTENTIONALLY LEFT BLANK

AIP Iceland
FLUGMÁLAHANDBÓK

AD ELEV 10

BIVO
 30 JUN 2011

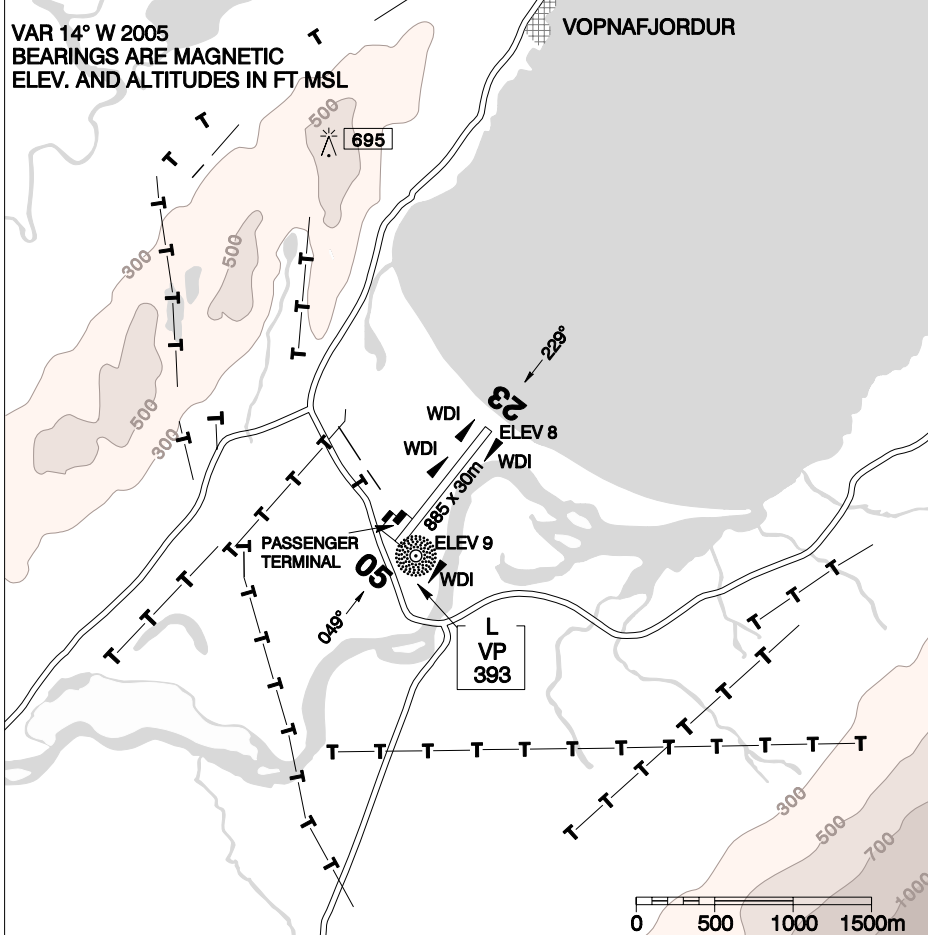
LANDING
 CHART - ICAO

ARP
 654314N
 0145102W

VOPNAFJORDUR

SCALE 1: 50 000

VAR 14° W 2005
 BEARINGS ARE MAGNETIC
 ELEV. AND ALTITUDES IN FT MSL



RUNWAY LIGHTING

THR LGT G LIM 05/23
 RWY LGT W LIM 05/23

APPROACH LIGHTING

PAPI 3° RWY 05/23
 THR ID LGT RWY 05/23

FACILITIES AVAILABLE

PASSENGER TERMINAL

TYPE OF RUNWAY SURFACE
 ASPHALT STABILIZED GRAVEL

TRUE BEARING OF RUNWAY
 035°/215°

THR COORDINATES

RWY 05: 654303N 0145121W
 RWY 23: 654326N 0145042W

CHANGES: EDITORIAL

T/O MINIMA

ICELANDIC CAA / FLUGMÁLASTJÓRN ÍSLANDS

Pub. by: ISAVIA / Útg.: FLUGSTOÐIR o.h.f.

THIS PAGE INTENTIONALLY LEFT BLANK

AIP Iceland

Flugmálahandbók

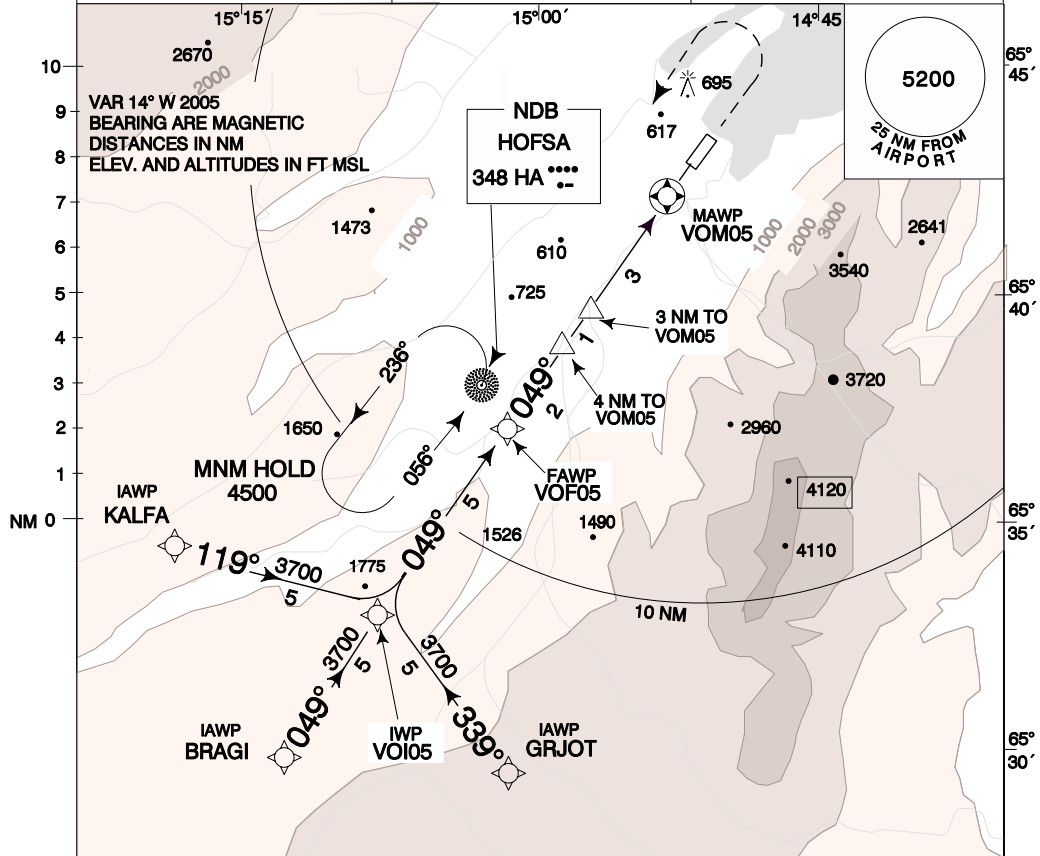
AD ELEV 10

BIVO
30 JUN 2011

**INSTRUMENT APPROACH
CHART - ICAO**
SCALE 1:300 000

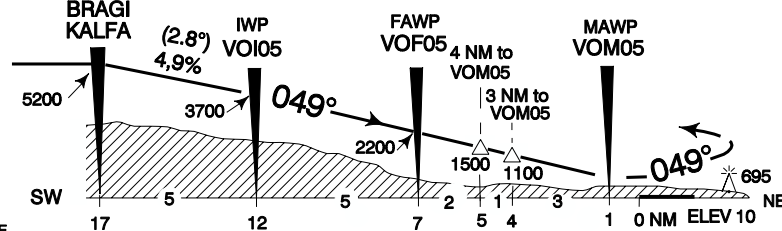
VOPNAFJORDUR AFIS 118.1
ACC 119.7

VOPNAFJORDUR
RNAV (GNSS) RWY 05
APPROACH COURSE 049°



TRANS LEVEL BY ATC
TRANS ALT 7000

MISSED APPROACH
CLIMB ON 049° TO 2000
LEFT CLIMBING TURN TO
HA NDB AND HOLD AT 4500

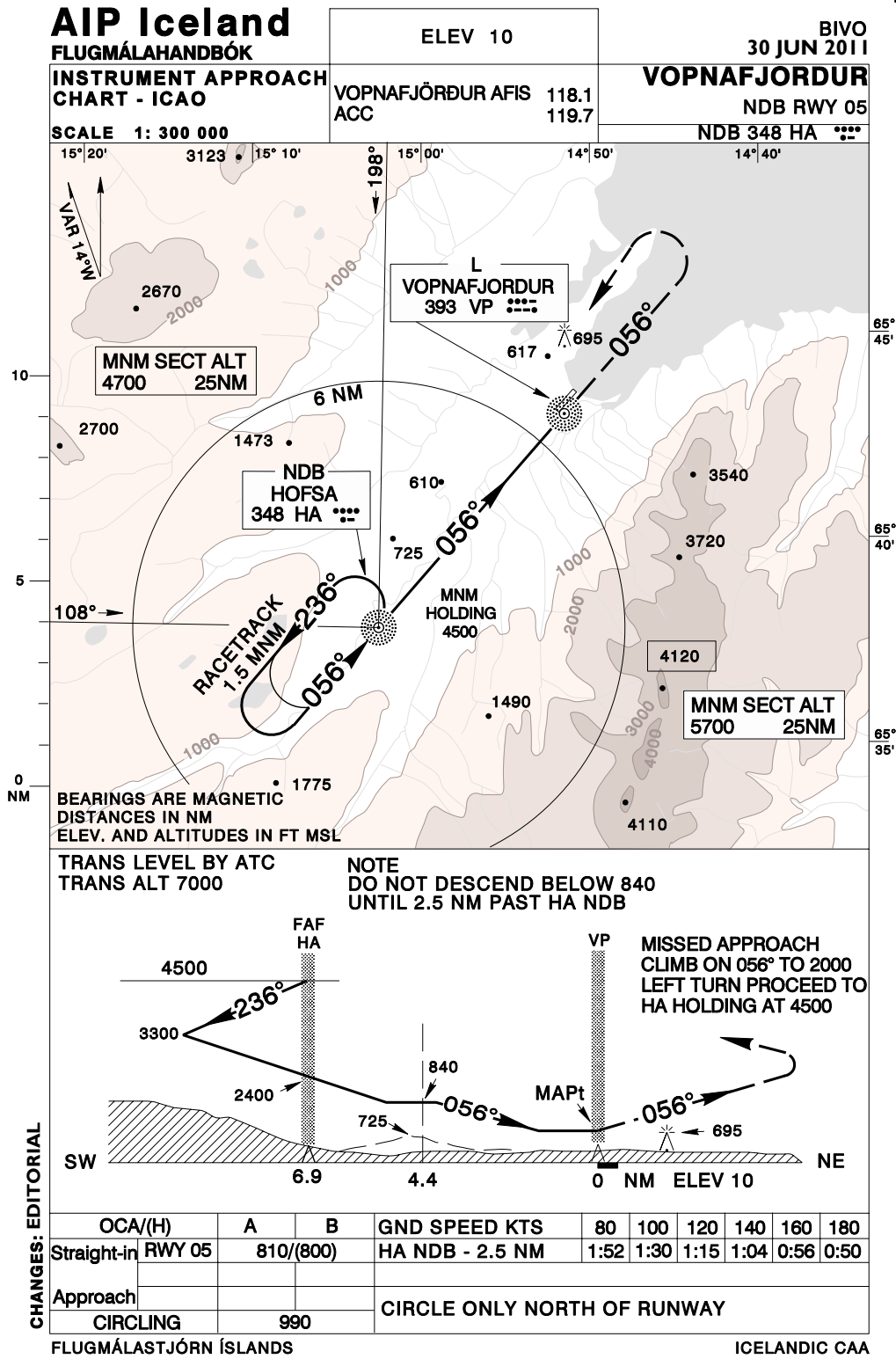


CHANGES: EDITORIAL

NOT TO SCALE		17	12	7	5	4	3	1	0 NM ELEV 10
OCA/ (H)		A		B					
Straight-in Approach	RWY 05	670 / (660)							
	CIRCLING	990		CIRCLE ONLY NORTH OF RWY					

ICELANDIC CAA / FLUGMÁLASTJÓRN ÍSLANDS

Pub. by: ISAVIA / Útg.: FLUGSTOÐIR o.h.f.



THIS PAGE INTENTIONALLY LEFT BLANK

BIVO AD 25.25 Leiðsöguhnit

25.25.1 VOPNAFJÖRÐUR GPS Circling

BIVO AD 25.50 Waypoint List

25.50.1 Vopnafjordur GPS Circling

Transition Waypoints

	CODING		DISPLAY	
KALFA (IAF)	65 34 25.38N	015 19 36.90W	65 34.42N	015 19.61W
BRAGI (IAF)	65 29 02.99N	015 14 43.81W	65 29.05N	015 14.73W
GRJOT (IAF)	65 29 05.97N	015 00 55.26W	65 29.10N	015 00.92W
VOI05 (IF)	65 33 10.50N	015 07 54.67W	65 33.17N	015 07.91W
VOF05 (FAF)	65 37 17.39N	015 01 02.37W	65 37.29N	015 01.04W
VOM05 (MAP _t)	65 42 13.27N	014 52 44.66W	65 42.22N	014 52.74W

THRESHOLD COORDINATES

	CODING		DISPLAY	
THR RWY 05	65 43 02.51N	014 51 21.41W	65 43.04N	014 51.36W
THR RWY 23	65 43 25.95N	014 50 41.80W	65 43.43N	014 50.70W

THIS PAGE INTENTIONALLY LEFT BLANK