

**BIBD AD 2.1 Staðarauðkenni og heiti
flugvallar**

**BIBD AD 2.1 Aerodrome location
indicator and name**

BIBD - BÍLDUDALUR / Bildudalur

**BIBD AD 2.2 Landfræðilegar og
stjórnunarupplýsingar
flugvalla**

**BIBD AD 2.2 Aerodrome geographical
and administrative data**

ENGLISH/ ICELANDIC		
1	ARP coordinates and site at Aerodrome	653829N
	Hnattstaða flugvalla	0233246W
2	Direction and distance from the CITY	4.5 NM - 140° GEO
	Stefna og fjarlægð frá borg	
3	Elevation / Reference temperature	26 FT
	Landhæð / viðmiðunarhitastig	
4	Geoid undulation at AD ELEV PSN	211 FT
	Bylgjulögun jarðsporvölu (frá WGS-84 viðmiðunarsporvölu) í hæðarviðmiðunarpunkti flugvallar	
5	MAG VAR / Annual change	19°W (2005) 12 min decreasing
	Misvísun / árleg breyting	
6	AD Administration, address, telephone, telefax, AFS	Isavia ohf.
	Rekstraraðili flugvallar, heimilisfang, sími, símbréf, AFS	Ísafjarðarflugvelli 400 Ísafirði, Iceland Telephone: +354 456 3640 Telefax: +354 456 4606 BIBD control tower / BIBD flugturn: Tel: +354 456 2266 e-mail: Finnbjorn.Bjarnason@isavia.is
7	Types of traffic permitted	VFR
	Leyfð flugumferð	
8	Remarks	NIL
	Athugasemdir	

BIBD AD 2.3 Þjónustutímar

BIBD AD 2.3 Operational hours

ENGLISH/ ICELANDIC		
1	AD Administration	During Office Hours 09:00-16:00
	Rekstraraðili flugvallar	Á skrifstofutíma 09:00-16:00
2	Customs and immigration	NIL
	Tollur og útlendingaeftirlit	
3	Health and sanitation	In town/Í bænum
	Heilsugæsla	
4	AIS Briefing Office	NIL
	Kynningarstofa upplýsingaþjónusta	
5	ATS Reporting Office (ARO)	NIL
	Tilkynningarstöð flugumferðarþjónustu	
6	MET Briefing Office	H24 - IMO telephone / Sími Veðurstofu Íslands: + 354 522 6000
	Kynningastofa veðurþjónustu	
7	ATS	HS - See AIP Supplement
	Flugumferðarþjónusta	Möguleg þjónusta - Sjá viðbæti við Flugmálahandbók

8	Fuelling	All days except Saturdays O/R /
	Eldsneyti	Alla daga nema laugardaga skv. beiðni
9	Handling	O/R (0800-1600)
	Afgreiðsla	Skv. beiðni (0800-1600)
10	Security	NIL
	Öryggisgæsla	
11	De-icing	NIL
	Afising	
12	Remarks	NIL
	Athugasemdir	

BIBD AD 2.4 Afgreiðsla og tæki

BIBD AD 2.4 Handling services and facilities

ENGLISH/ ICELANDIC		
1	Cargo handling facilities:	Normal facilities available O/R Venjulegur búnaður fyrir hendi skv. beiðni
	Fraktmeðhöndlun	
2	Fuel / oil types	JET-A1
	Eldsneytistegundir / olíur	
3	Fuelling facilities / capacity	39L per. min 39L á mín.
	Eldsneytisbúnaður / magn	
4	De-icing facilities	NIL
	Afisingarbúnaður	
5	Hanger space available for visiting aircraft	NIL
	Flugskýlispláss fyrir aðkomuvélar	
6	Repair facilities for visiting aircraft	NIL
	Viðhaldsmöguleikar fyrir aðkomuvélar	
7	Remarks	No oxygen or related servicing Ekkert súrefni eða hliðstæð þjónusta
	Athugasemdir	

BIBD AD 2.5 Aðstaða farþega

BIBD AD 2.5 Passenger facilities

ENGLISH/ ICELANDIC		
1	Hotels	Available in town / Fáanleg í bænum
	Hótel	
2	Airport Restaurant	NIL
	Veitingastaðir á flugvelli	
3	Transportation	Taxi/bus available on-request Leigubílar/rútur samkvæmt beiðni
	Fólksflutningar	
4	Medical facilities	NIL
	Hjúkrunaraðstaða	
5	Bank and Post Office	In Town / Í bænum
	Banki og pósthús	
6	Tourist Office	NIL
	Ferðaskrifstofa	
7	Remarks	NIL
	Athugasemdir	

BIBD AD 2.6 Björgun og eldvarnir

BIBD AD 2.6 Rescue and fire fighting services

ENGLISH/ ICELANDIC		
1	AD category for fire fighting	CAT III
	Flokkur björgunar- og slökkviþjónustu	
2	Rescue equipment	Yes / Já
	Björgunartæki	
3	Capability for removal of disabled aircraft	Crane and trailer in town
	Möguleiki á að fjarlægja bilaðar flugvélar	Krani og tengivagn í þorpi
4	Remarks	NIL
	Athugasemdir	

BIBD AD 2.7 Árstíðarbundnar hreinsanir

BIBD AD 2.7 Seasonal Availability - Clearing

ENGLISH/ ICELANDIC		
1	Types of Equipment	See snow plan AD 1.2.2
	Tegund tækja	Sjá kafla AD 1.2.2 um vetrarviðhald
2	Clearance priorities	See snow plan AD 1.2.2
	Forgangsröð hreinsunar	Sjá kafla AD 1.2.2 um vetrarviðhald
3	Remarks	All seasons, winter conditions from Oct. to Apr.
	Athugasemdir	Allt árið, vetrartími frá okt. til apr.

BIBD AD 2.8 Hlað, akbrautir og staðsetning gátstaða

BIBD AD 2.8 Aprons, taxiways and check locations data

ENGLISH/ ICELANDIC		
1	Apron surface and strength	Asphalt stabilized gravel
	Yfirborð stæðis og styrkur	Tjörubundin grús
2	Taxiway width, surface and strength	25M, wide asphalt stabilized gravel
	Breidd akbrautar, yfirborð og styrkur	25m, tjörubundin grús
3	ACL location and elevation	To be notified / Verður tilkynnt
	Staðsetning og hæð fyrir hæðarmælisathugun	
4	VOR checkpoints	NIL
	VOR-gátstaðir	
5	INS checkpoints	NIL
	INS-gátstaðir	
6	Remarks	NIL
	Athugasemdir	

BIBD AD 2.9 Leiðbeininga- og upplýsingaskilti og merkingar

BIBD AD 2.9 Surface movement guidance and control system and markings

ENGLISH/ ICELANDIC		
1	TWY guidelines	NIL
	Akbrautamerkingar	
2	RWY & TWY markings and LGT	Yes
	Flugbrautar- og akbrautamerkingar og ljós	Já
3	Stop bars	NIL
	Stöðvunarljós	

4	Remarks	
	Athugasemdir	

BIBD AD 2.10 Flugvallarhindranir

BIBD AD 2.10 Aerodrome Obstacles

OBST ID / Designation	OBST type	OBST position	ELEV / HGT	Markings / Type, colour	Remarks
a	b	c	d	e	f
To be notified / Verður tilkynnt					

BIBD AD 2.11 Veittar veðurupplýsingar

BIBD AD 2.11 Meteorological information provided

ENGLISH/ ICELANDIC		
1	Associated MET Office Aðalveðurstofa	Icelandic Met Office, see Gen 3.5 / Veðurstofa Íslands, sjá GEN 3.5
2	Hours of service þjónustutími	H24 / Allan sólarhringinn
3	Office responsible for TAF preparation Skrifstofa ábyrg fyrir TAF	Icelandic Met Office / Veðurstofa Íslands
	Periods of validity Gildistími	See GEN 3.5.4.1 / Sjá GEN 3.5.4.1
4	Type of landing forecast Tegund upplýsinga fyrir landingu	NIL
5	Briefing/consultation provided Veðurkynning/ráðfærsla veitt	Icelandic Met Office / Veðurstofa Íslands Telephone / simi: + 354 522 6000
6	Flight documentation Fluggögn	METAR, TAF, SIGMET, Flight condition over Iceland / Flugveðurskýrði yfir Íslandi, Low Level Wind/SIGWX forecasts charts, NAT Wind/Temp/ SIGWX forecasts charts.
	Language(s) used Tungumál	English and Icelandic / Enska og íslenska
7	Charts and other information available for briefing or consultation Kort og aðrar upplýsingar tiltækar fyrir veðurkynningu eða ráðfærslu	Ref:/Tilv.: GEN 3.1, GEN 3.5 http://en.vedur.is/weather/aviation/ http://www.vedur.is/vedur/flugvedur/
8	Supplementary equipment available for providing information Önnur tæki til upplýsingaöflunar	NIL
9	ATS units provided with information Flugumferðarþjónusta sem fær upplýsingarnar	Bildudalur AFIS / Bildudalur Flugradió ACC / Flugstjórnarmiðstöð
10	Additional information (limitation of service, etc.) Viðbótarupplýsingar (takmörkun þjónustu)	NIL

BIBD AD 2.12 Sérkenni flugbrauta

BIBD AD 2.12 Runway physical characteristics

Designations RWY NR	TRUE BRG	Dimensions of RWY (M)	Strength (PCN) & surface of RWY and SWY	THR coordinates RWY end coordinates THR geoid undulation	THR elevation & highest elevation of TDZ of precision APP RWY
1	2	3	4	5	6
05	027.74	940X30	— Asphalt stabilized gravel	653815.20N 0233303.10W — GUND 211 FT	THR 11 —
23	207.75	940X30	— Asphalt stabilized gravel	653842.06N 0233228.89W — GUND 211 FT	THR 26 —

Designations RWY NR	Slope of RWY-SWY	SWY dimensions (M)	CWY dimensions (M)	Strip dimensions (M)	OFZ
1	7	8	9	10	11
05	+ 0.4%	NIL	200	1060X60	NIL
23	- 0.4%	NIL	200	1060X60	NIL

Designations RWY NR	Remarks
1	12
05	NIL
23	

BIBD AD 2.13 Skilgreindar brautarlengdir

BIBD AD 2.13 Declared distances

RWY Designator	TORA (M)	TODA (M)	ASDA (M)	LDA (M)	Remarks
1	2	3	4	5	6
05	1000	1200	1000	940	TKOF from paved end
23	1000	1200	1000	940	

BIBD AD 2.14 Aðflugs- og flugbrautarljós

BIBD AD 2.14 Approach and runway lighting

RWY Designator	APCH LGT type LEN INTST	THR LGT colour WBAR	VASIS (MEHT) PAPI	TDZ LGT LEN	RWY Centre Line LGT Length, spacing, colour, INTST	RWY edge LGT LEN, spacing, colour, INTST	RWY End LGT colour WBAR	SWY LGT LEN (M) colour	Remarks
1	2	3	4	5	6	7	8	9	10
05	NIL	THR LIH GREEN	APAPI	NIL	NIL	W EDGE	RED	NIL	THR ID LGT RWY 05/23 FLG WHITE
23	NIL	THR LIH GREEN	APAPI	NIL	NIL	W EDGE	RED	NIL	

BIBD AD 2.15 Önnur lýsing og vararafmagn

BIBD AD 2.15 Other lighting, secondary power supply

ENGLISH/ ICELANDIC		
1	ABN/IBN location, characteristics and hours of operation Flugvallarviti - staðsetning	NIL
2	WDI location and LGT Anemometer location and LGT Vindmælir	At TDZ / Við snertisvæði brautar
3	TWY edge Akbrautarkantljós	NIL
4	Secondary power supply / switch-over time Vararafmagn / skiptitími	NIL
5	Remarks: Athugasemdir	NIL

BIBD AD 2.16 Lendingarsvæði fyrir þyrlur

BIBD AD 2.16 Helicopter landing area

ENGLISH/ ICELANDIC		
1	Coordinates TLOF or THR of FATO Staðsetning landingarsvæðis	Landing area at end of rwy 23/ Flugbrautarendi 23
2	TLOF and/or FATO elevation M/FT Hæð á landingarstað M/FT	26 FT
3	TLOF and FATO area dimensions, surface, strength, marking Stærð, yfirborð, styrkleiki, merking	Runway Asphalt stabilized gravel/ Tjörubundin grús
4	True and MAG BRG of FATO Réttstefna og segulstefna á FATO	NIL
5	Declared distance available Skilgreind lengd	NIL
6	Remarks Athugasemdir	NIL

BIBD AD 2.17 Loftrými flugumferðarþjónustu

BIBD AD 2.17 ATS airspace

ENGLISH/ ICELANDIC		
1	Designation and lateral limits Heiti og útlínur	Uncontrolled airspace/ Óstjórnað loftrými
2	Vertical limits Hæðarmörk	NIL
3	Airspace classification Flokkun loftrýmis	Class G / Flokkur G
4	ATS unit call sign and language(s) Kallmerki flugumferðarþjónustu og tungumál	Bíldudalur Flugradió – Íslenska / Icelandic
5	Transition altitude Skiptihæð	7000 FT MSL
6	Remarks Athugasemdir	NIL

BIBD AD 2.18 ATS fjarskiptabúnaður

BIBD AD 2.18 ATS communication facilities

Service designation	Call sign	Frequency		Hours of Operation	Remarks
		Transmit	Receives		
1	2	3		4	5
AFIS	Bildudalur Radio	119.1		See AIP Supplement	Reykjavik Control 119.7

BIBD AD 2.19 Flugleiðsögu- og aðflugsbúnaður

BIBD AD 2.19 Radio navigation and landing aids

Type of aid, CAT of ILS/MLS (For VOR/ILS/MLS, give VAR)	ID	Frequency	Hours of operation	Site of transmitting antenna coordinates	Elevation of DME transmitting antenna	Remarks
1	2	3	4	5	6	7
NDB / MKR	SB	310 KHZ	H24	654718.6N 0235927.1W		

BIBD AD 2.20 Svæðisbundnar umferðarreglur

NIL

BIBD AD 2.21 Flugaðferðir til hávaðamildunar

NIL

BIBD AD 2.22 Flugaðferðir

NIL

BIBD AD 2.23 Viðbótarupplýsingar

NIL

BIBD AD 2.24 Kort sem tilheyrja BÍldudalsflugvelli

BIBD AD 2.20 Local traffic regulations

NIL

BIBD AD 2.21 Noise abatement procedures

NIL

BIBD AD 2.22 Flight procedures

NIL

BIBD AD 2.23 Additional Information

NIL

BIBD AD 2.24 Chart Related to BÍldudalur Aerodrome

Kort / Chart

Instrument Approach Chart - ICAO
RNAV (GNSS) Circling Approach Course 013°

THIS PAGE INTENTIONALLY LEFT BLANK

AIP ICELAND
FLUGMÁLAHANDBÓK

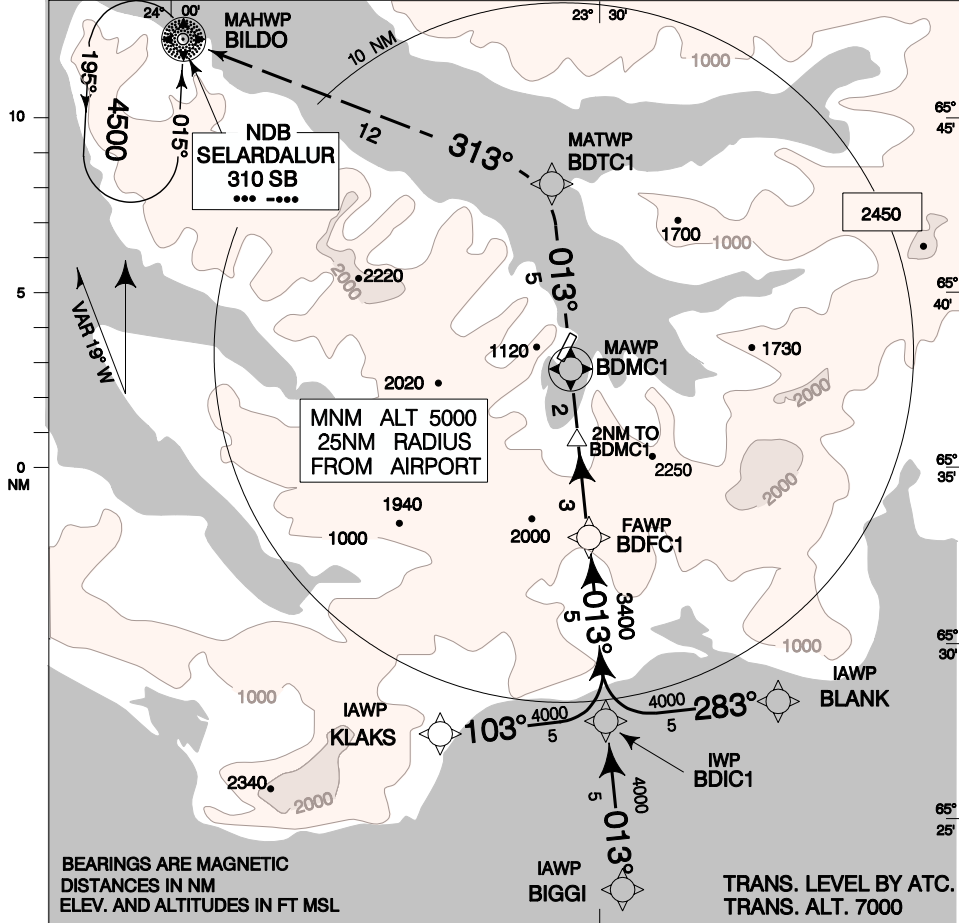
ELEV 26	
ARP 65°38'29" N 23°32'46" W	
BILDUDALUR AFIS	119.1
ACC	119.7

BIBD
4 AUG 2005

**INSTRUMENT APPROACH
CHART**

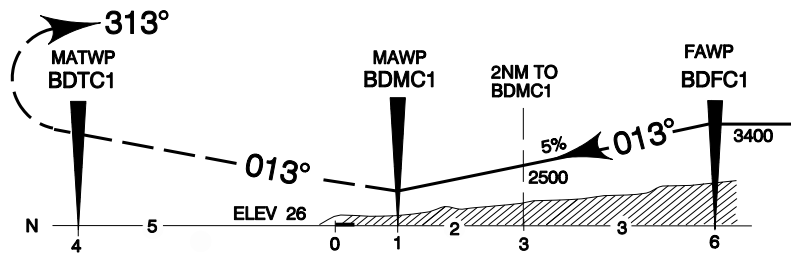
SCALE 1:400 000

BILDUDALUR
RNAV (GNSS) CIRCLING
APPROACH COURSE 013°



MISSED APPROACH: CLIMB ON TRACK 013°. AT 2300 OR NO LATER THAN BDMC1 TURN LEFT ON TRACK 313° TO SB NDB / BILDO AND HOLD AT 4500.

CHANGES: GNSS FIX NAMES



OCA/(H)	A	B
MNM CIRCLING	1900/(1874)	

FLUGMÁLASTJÓRN ÍSLANDS

ICELANDIC CAA

THIS PAGE INTENTIONALLY LEFT BLANK

BIBD AD 2.25 Leiðsöguhnit

2.25.1 BÍLDUDALUR GPS Circling

BIBD AD 2.25 Way Point List

2.25.1 Bildudalur GPS Circling

Transition Waypoints

KLAKS TRANSITION

	CODING		DISPLAY	
KLAKS (IAF)	65 27 14.04N	023 41 41.07W	65 27.23N	023 41.68W
BDICI (IF)	65 27 45.64N	023 29 42.81W	65 27.76N	023 29.71W
BDFCI (FAF)	65 32 44.02N	023 30 57.78W	65 32.73N	023 30.96W
BDMCI (MAP _t)	65 37 42.40N	023 32 12.99W	65 37.71N	023 32.22W
BDTCI (MATF)	65 42 40.78N	023 33 28.47W	65 42.68N	023 33.47W
BILDO (MAHF)	65 47 18.59N	023 59 27.07W	65 47.31N	023 59.45W

BIGGI TRANSITION

BIGGI (IAF)	65 22 47.26N	023 28 28.02W	65 22.79N	023 28.47W
BDICI (IF)	65 27 45.64N	023 29 42.81W	65 27.76N	023 29.71W
BDFCI (FAF)	65 32 44.02N	023 30 57.78W	65 32.73N	023 30.96W
BDMCI (MAP _t)	65 37 42.40N	023 32 12.99W	65 37.71N	023 32.22W
BDTCI (MATF))	65 42 40.78N	023 33 28.47W	65 42.68N	023 33.47W
BILDO (MAHF))	65 47 18.59N	023 59 27.07W	65 47.31N	023 59.45W

BLANK TRANSITION

BLANK (IAF)	65 28 16.30N	023 17 44.08W	65 28.27N	023 17.74W
BDICI (IF)	65 27 45.64N	023 29 42.81W	65 27.76N	023 29.71W
BDFCI (FAF)	65 32 44.02N	023 30 57.78W	65 32.73N	023 30.96W
BDMCI (MAP _t)	65 37 42.40N	023 32 12.99W	65 37.71N	023 32.22W
BDTCI (MATF)	65 42 40.78N	023 33 28.47W	65 42.68N	023 33.47W
BILDO (MAHF)	65 47 18.59N	023 59 27.07W	65 47.31N	023 59.45W

THRESHOLD COORDINATES

	CODING		DISPLAY	
THR RWY 05	65 38 15.20N	023 33 03.10W	65 38.25N	023 33.05W
THR RWY 23	65 38 42.06N	023 32 28.89W	65 38.70N	023 32.48W

THIS PAGE INTENTIONALLY LEFT BLANK